



# Fire Operations Plan 2017/18 – 2019/20

Port Phillip Region

Environment,  
Land, Water  
and Planning

**FOREST FIRE  
MANAGEMENT VICTORIA**

## Acknowledgements

DELWP Port Phillip Region and District Fuel Management staff. FFMVic planning staff from Port Phillip Region. East Central Bushfire Risk Landscape. DELWP Environment and Natural Resources (Biodiversity), Forest Management, Cultural Heritage, Historical Heritage and Engagement values specialists. Parks Victoria, Melbourne Water and VicForests values specialists. Aboriginal Victoria. Wurundjeri Tribe Land and Compensation Cultural Heritage Council. Bunurong Land Council Aboriginal Corporation. Country Fire Authority, Local Government and private property owners involved in cross tenure burn planning for this Fire Operations Plan.

## Photo credit

Paul Hitch

© The State of Victoria Department of Environment, Land, Water and Planning (DELWP) 2016



This work is licensed under a Creative Commons Attribution 4.0 International licence. You are free to re-use the work under that licence, on the condition that you credit the State of Victoria as author. The licence does not apply to any images, photographs or branding, including the Victorian Coat of Arms, the Victorian Government logo and the Department of Environment, Land, Water and Planning (DELWP) logo. To view a copy of this licence, visit <http://creativecommons.org/licenses/by/4.0/>

ISBN 978-1-76047-731-8 (pdf/online)

## Disclaimer

This publication may be of assistance to you but the State of Victoria and its employees do not guarantee that the publication is without flaw of any kind or is wholly appropriate for your particular purposes and therefore disclaims all liability for any error, loss or other consequence which may arise from you relying on any information in this publication.

## Accessibility

If you would like to receive this publication in an alternative format, please telephone the DELWP Customer Service Centre on 136186, email [customer.service@delwp.vic.gov.au](mailto:customer.service@delwp.vic.gov.au), or via the National Relay Service on 133 677 [www.relayservice.com.au](http://www.relayservice.com.au). This document is also available on the internet at [www.delwp.vic.gov.au](http://www.delwp.vic.gov.au).

# Contents

<b>Assistant Chief Fire Officer Foreword</b> .....	<b>4</b>
<b>Purpose and objectives of the Port Phillip Region Fire Operations Plan</b> .....	<b>5</b>
Purpose.....	5
Objective.....	6
Strategic Bushfire Management Planning .....	6
Bushfire Risk Reduction.....	7
Working with communities .....	8
Maintaining and enhancing Ecosystem Resilience .....	9
Indigenous Burning in Port Phillip Region .....	12
Melbourne Water Planned Burns .....	12
<b>Endorsement</b> .....	<b>13</b>
<b>Viewing the Port Phillip Region Fire Operations Plan</b> .....	<b>13</b>
<b>How to become involved in the Fire Operations Planning Process</b> .....	<b>14</b>
<b>Appendix (i): Schedules of Activities</b> .....	<b>15</b>
<b>YARRA DISTRICT SCHEDULE</b> .....	<b>15</b>
<b>Appendix (ii): Schedules of Activities</b> .....	<b>23</b>
<b>METROPOLITAN DISTRICT SCHEDULE</b> .....	<b>23</b>
<b>Appendix (iii): Schedules of Activities</b> .....	<b>33</b>
<b>MELBOURNE WATER SCHEDULE</b> .....	<b>33</b>
<b>Appendix (IV): Schedules of Activities</b> .....	<b>36</b>
<b>MELBOURNE FIRE AND EMERGENCY PROGRAM SCHEDULE</b> .....	<b>36</b>
<b>Appendix (V): Fire Management Zones</b> .....	<b>38</b>
<b>AMENDMENTS TO FIRE MANAGEMENT ZONES</b> .....	<b>38</b>
<b>Glossary</b> .....	<b>39</b>



# Assistant Chief Fire Officer Foreword

The Department of Environment, Land, Water and Planning (DELWP) in collaboration with Parks Victoria (PV) has developed this Fire Operations Plan (FOP) to outline where fuel management activities will be undertaken on public land across the Port Phillip Region. It is designed to implement DELWP's long term strategic bushfire management plans that outline how we will manage the risk of bushfires, while maintaining and improving natural ecosystems.

*Safer Together: A new approach to reducing the risk of bushfire in Victoria* outlines the Victorian Government approach to reducing the risks of bushfire. It focuses on how effective our actions are in reducing risk, not just the amount of activity we undertake and aims for a more integrated approach across public and private land.

It commits the Victorian Government to maintaining bushfire risk at or below 70% across the state. This FOP outlines how fuel management activities in the Port Phillip Region will contribute to meeting this state-wide risk reduction target as well as those for maintaining ecosystem health. It has been shaped by a variety of information, such as risk-based planning detailed within our strategic bushfire management plans, specialist input from Forest Fire Management Victoria (FFMVic\*) staff and key industries, as well as knowledge from local communities and key stakeholders such as the CFA and local councils.

*Safer Together* also commits the CFA and FFMVic to working more closely to deliver the best bushfire risk reduction outcomes for Victorians. In recognising that bushfire risk occurs across all land, we have identified cross-tenure burns on this FOP that cover both public and private land. These will primarily be led by FFMVic staff with CFA assisting in the planning and delivery. Over time, CFA and FFMVic burns will be planned more collaboratively as the two agencies continue to work closely together.

At present, CFA planned burns on private land are documented in Municipal Fire Management Plans held by the relevant local government authority. Municipal Fire Management Plans also include roadside and railway side burns where applicable. These burns are not listed or part of this plan.

Fuel management is one of the most effective ways to reduce the impacts of bushfires to communities and the environment.

FFMVic staff work with interest groups and the wider community to understand how planned burns may impact people and industries and to gain important local knowledge to better plan and deliver fuel management activities. Based on feedback and local knowledge from local communities and key stakeholders, we review and update the Port Phillip Region FOP each year. We may make changes to burns or other fuel management activities, however our highest priority in carrying out fuel management activities is always the need to reduce the impact of bushfires on life and property.

I would like to acknowledge the significant work that has been put into developing this FOP, both by FFMVic staff and their local communities, and I encourage your continued input to ensure our plans protect those assets and values which are important to all Victorians.



**Shannon Devenish**

Acting Assistant Chief Fire Officer DELWP, Port Phillip Region

\* Forest Fire Management Victoria (FFMVic), consists of specialist staff from DELWP, Parks Victoria, Melbourne Water and Vic Forests.

# Purpose and objectives of the Port Phillip Region Fire Operations Plan

## Purpose

The maps and schedules contained within this FOP set out where and when fuel management activities are planned to occur for the period 2017/18 to 2019/20 within the Port Phillip Region.

These activities are carried out to reduce bushfire fuels – like leaves, twigs, bark and grass – to make bushfires less intense so that firefighters have a better chance of protecting communities. Activities are also undertaken to maintain the health of ecosystems that rely on fire to regenerate.

It is important to note that the ability to carry out burns is dependent on seasonal and local weather conditions. To allow for this, planned burns from the second and third years of the Plan may be brought forward to the current year to replace a burn planned for the first year.

This document consists of District or agency sub-plans and contains the following schedules:

**Schedule 1 – Planned Burns.** This schedule lists planned fuel reduction, ecological and other planned burns by indicative year for the three-year period.

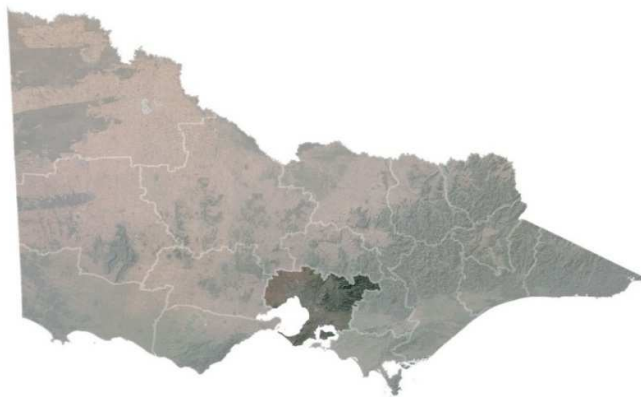
**Schedule 2 – Non-Burn Fuel Treatments.** This schedule lists the program that uses methods other than burning to achieve certain fuel management objectives.

**Schedule 3 – Strategic Fuelbreaks.** This schedule provides an overview of strategic fuelbreaks to be constructed during the three-year period. The locations of strategic fuelbreaks are included for information only. These activities are approved via other DELWP and Parks Victoria processes.

The following Districts are part of the Port Phillip Region:

Yarra District	Metropolitan District
----------------	-----------------------

**Map 1:** Port Phillip Region



Burns associated with logging regeneration as well as small heap and grass burns are not included in the Fire Operation Planning process.

The FOP is prepared, and will be implemented in accordance with the *Code of Practice for Bushfire Management on Public Land 2012* (the Code), *Safer Together: A new approach to reducing the risk of bushfire in Victoria* and relevant FFMVic Instructions, Manuals and Guidelines.

## Objective

The Port Phillip Region FOP has been developed to implement strategies set out in DELWP's strategic bushfire management plans which address DELWP's legal obligations, policy commitments and objectives, including:

- bushfire risk reduction to protect human life and property,
- maintaining and enhancing ecosystem resilience, and
- achieving other desired outcomes as identified by communities.

**The activities within the Port Phillip Region FOP are designed to balance outcomes across all objectives.**

## Strategic Bushfire Management Planning

In consultation with CFA and communities, DELWP has developed long-term strategic bushfire management plans to identify where it is best to undertake fire management to achieve the above objectives.

The strategies apply four Fire Management Zones (FMZ) as described in the Code. This zoning establishes the primary objective for fuel management in different areas of the landscape and include:

**Asset Protection Zone (APZ):** where intensive fuel management provides the highest level of localised protection to human life and property;

**Bushfire Moderation Zone (BMZ):** where there is fuel management to reduce the speed and intensity of bushfires, either close to towns or as they spread through the landscape;

**Landscape Management Zone (LMZ):** where fuel management is done to reduce fuel hazard, improve ecosystem resilience and manage the land for particular uses (such as forest regeneration and water catchment protection); and

**Planned Burning Exclusion Zone (PBEZ):** where there is no planned burning, mainly to protect areas that can't tolerate fire.

The zones and other strategies in strategic bushfire management plans inform the development of the FOP. They are used to determine where fuel management activities need to be carried out over the next three-year period to meet the longer-term strategy's objectives, if weather and other conditions permit.

Burns are planned across all available fire management zones (APZ, BMZ and LMZ) for maintaining bushfire risk to desired levels. It is just as important to carry out planned burns in remote areas, as fires can start in these areas and spread to threaten houses and communities.

The proposed FOP supports the implementation of the approved East Central fuel management strategy in the Strategic Bushfire Management Plan (SBMP). The East Central SBMP outlines key Priority Fuel Management Areas where risk reduction is most beneficial. At the end of 2016, Fire Management Zones within the Priority Fuel Management Areas were assessed and some were modified to reflect the intent of the Priority Fuel Management Areas in line with the SBMP.

To create a strategic FOP, Districts were set a range of hectares to position a certain amount of planned burns in APZ and BMZ zones, as these now reflect the intent of the SBMP. The targets were based on how many hectares of each zone is within the District and accounted for suitable planned burning rotations of these zones to maintain effectiveness at reducing bushfire behaviour. No targets were set for LMZ unless Districts nominated planned burns in this zone for ecological or risk reduction purposes. The target was met by all Districts.

The East Central fuel management strategy works in a combination of burning close to assets to protect them from fire by direct flame contact and by undertaking burning often long distances away from the assets to change the behaviour of fire and reduce spotting and fire convection.

Within Yarra District, planned burns aim to reduce fuel hazard for the protection of life and property in four large sub-catchments. These include Healesville, Warburton and adjacent towns, Powelltown and Bunyip State Park and towns to the south. These planned burns are a part of a larger mosaic of burns that, combined, aim to reduce risk to larger settlements. There are also a few planned burns situated within Yarra State Forest and Yarra Ranges National Park which are treated on longer rotations but aim to protect Melbourne’s designated water supply catchments and slow the spread of large bushfires moving into the bush. Several smaller burns aim to reduce localised risk to specific areas such as Cockatoo and Beaconsfield Upper.

Metropolitan District planned burns are also based on sub-catchments, but have smaller areas due to the nature of the District being largely peri-urban development. The Dandenongs, Lysterfield and Warrandyte planned burns in APZ/BMZ are all for the protection of nearby residents as well as for communities living downstream under bushfire weather conditions. Arthur’s Seat planned burn consolidates efforts from previous years. There is proportionally a large amount of planned burning in LMZ in Metropolitan District as these areas are being treated for positive ecological fire regimes.

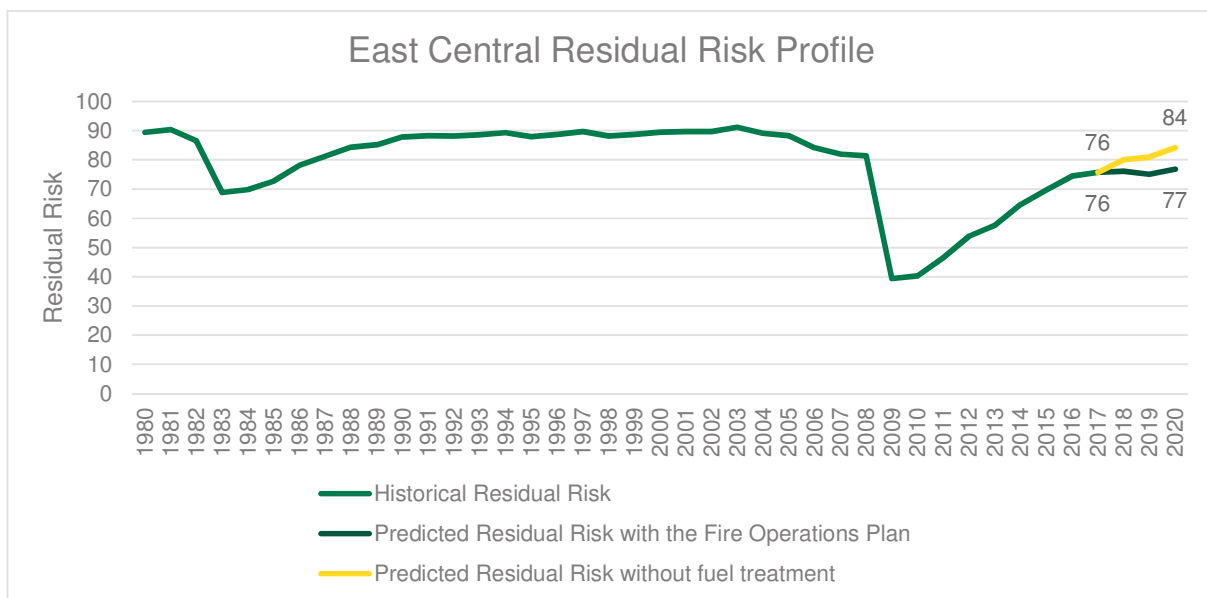
### Bushfire Risk Reduction

*Safer Together: A new approach to reducing the risk of bushfire in Victoria* sets out the Victorian Government’s commitments to reducing the risk of bushfire in Victoria. It adopts a risk reduction target to guide fuel management, maintaining bushfire risk at or below a residual risk of 70% in the long-term.

Residual risk, is the risk, on average, that bushfires will impact on life and property across the landscape. It is expressed as the percentage of the risk that remains after bushfire history and fuel management (mainly planned burning) activities are considered.

Each DELWP District works towards managing the local risk on public land which collectively will meet the Statewide risk reduction target.

Following the 2016/2017 FOP delivery, the East Central risk landscape is at 76% residual risk. The short-term target for East Central is to stabilise the increase in risk to below 90%, as areas impacted by the Black Saturday Bushfires re-grow, and once again become flammable. The 2017/2018 Port Phillip Region FOP is projected to keep the residual risk to 77% over the next three years.

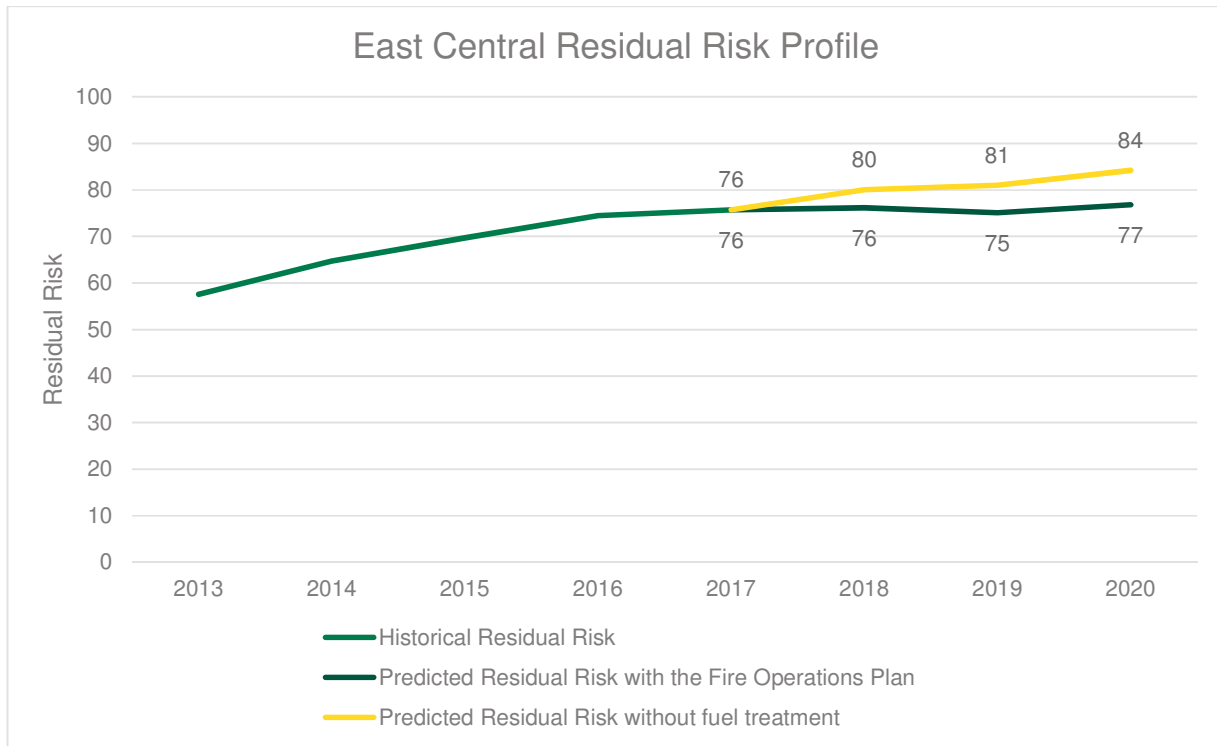


**Figure 1.** East Central Bushfire Risk Landscape Residual Risk Profile (years 1980 - 2017), with projected Residual Risk Profile (years 2018 – 2020) following implementation of the 2017/18 – 2019/20 FOP, or without.

East Central contributes to 33% of the statewide residual risk. By maintaining the risk in East Central beneath the goal of 90%, and indeed beneath 80%, the 2017/2018 Port Phillip Region FOP will contribute to East Central's proportion of state-wide risk reduction.

**Table 1.** Total area planned for fuel treatment (planned burning) for the 2017/18 – 2019/20 FOP.

	Year 1 (ha)	Year 2 (ha)	Year 3 (ha)	Total
<b>Metropolitan District</b>	658	858	835	2352
<b>Yarra District</b>	4187	3165	3205	10556
<b>Port Phillip Region</b>	4845	4023	4040	12908



**Figure 2.** Projected residual risk (years 2018 – 2020) following implementation of the 2017/18 – 2019/20 FOP, or without.

As well as a risk reduction target, *Safer Together* also commits DELWP and CFA to sharing responsibility for cross-tenure fuel management with private landholders and local Government. In the past, DELWP managed bushfire risk on public land only and CFA on private land, whereas *Safer Together* is about transitioning to delivering burns together, regardless of land tenure.

While this FOP covers predominantly planned burning on public land, several cross-tenure planned burns are also included, where fuel management based on risk has been identified.

Where cross-tenure burns have been included on this FOP, representatives from either, or both, CFA and DELWP have worked collaboratively with the relevant landholder(s) to plan the burn. Burns conducted partially or wholly on private land are always undertaken with the landholder's consent.

In future, we aim to have a greater number of private land burns on the FOP, where risk assessment indicates it is needed. More private landholders will be involved in fuel management strategy development, and they and the CFA will be empowered to conduct burns on private land with the support of FFMVic.

### Working with communities

Managing bushfire risk is an ongoing and shared responsibility in which everyone has a role. To work well with communities to manage bushfire risk, DELWP operates under the principles of the *DELWP Community Charter* and CFA operates under the *CFA Service Delivery Strategy 2015-2020*.



In the Port Phillip Region, DELWP and CFA form partnerships with each other to work with communities, while each agency also maintains relationships with communities independent of each other. Under *Safer Together*, partnerships between DELWP, CFA, local government and other agencies will continue to be enhanced so that communities receive the best level of service.

DELWP works all year round with communities to understand and reduce bushfire risk. As a part of delivering *Safer Together*, DELWP has worked with many key stakeholders and partners to develop the FOP, including Traditional Owner groups, local Government, community groups, individual community members, peak environment groups, tourism boards and agricultural businesses. These bodies have provided valuable input by highlighting important values for protection and fuel treatment nominations. Engagement occurred through various channels, including written submissions, face-to-face meetings, field visits, community information events, and telephone conversations. This local knowledge has been incorporated in determining where planned burns take place, how they should be delivered and what values should take place. This FOP will have most effect on communities of the Gembrook, Healesville, Upper Yarra Valley, Little Yarra Valley, Dandenong Ranges, Lysterfield, Eltham and St Andrews area. We will be working closely with these, and other communities to manage this.

Individuals, agencies and community groups in Port Phillip Region are encouraged to contact DELWP at any time of the year to discuss fuel management and planned burning in their local area.

Consistent with *Safer Together: A new approach to reducing the risk of bushfire in Victoria* both Yarra and Metropolitan Districts work with the CFA to identify and undertake fuel management opportunities to reduce bushfire risk on private property and Committee of Management (COM) land adjacent to our public land estate. These cross tenure burns provide an increased level of risk reduction as burn boundaries can be placed more strategically or logically when adopting a tenure blind approach. Often FFMVic are able to bring burn edges out to paddocks, or closer to houses than would otherwise not be possible. In some cases, where tracks do not exist or access is too difficult, burns would not be possible at all without the inclusion of private property or COM land. District staff work closely with both local CFA brigades, CFA Vegetation Management Officers (VMO), private land owners and local Government to plan, prepare and deliver these, and other burns.

There are fourteen cross tenure burns currently scheduled in this FOP. These burns are located across all three CFA Districts in Port Phillip Region, Districts 08, 13 and 14.

An example that positively demonstrates full implementation of the *Safer Together* Policy in Port Phillip Region is the Cockatoo – Garden City Estate, cross tenure fuel reduction burn. This burn has been planned over three separate land tenures, including private property, Crown Land under Committee of Management by Cardinia Shire Council, and Wright Forest Bushland Reserve, managed by Parks Victoria. Whilst FFMVic is the lead agency, the CFA, Cardinia Shire Council and private property owners are working collaboratively with FFMVic around the planning, engagement, preparation and operational delivery of the burn.

Planning and delivering this burn with a tenure blind approach allows for a higher level of localised protection of human life, property and assets, than would otherwise not be possible if cross tenure burning was not an option.

The township of Cockatoo and surrounding area was heavily impacted by the 1983 Ash Wednesday bushfires which has left a sense of nervousness amongst the community.

Important ecological values such as the *Azure Kingfisher*, *Hair pin Banksia* and *Speckled Warbler*, have been identified in or near the planned burn area. Values specialists from DELWP and PV, in collaboration with FFMVic planning staff are working closely to ensure the burn can be effectively delivered without impacting these ecological values.

### **Maintaining and enhancing Ecosystem Resilience**

FFMVic is committed to maintaining or improving the resilience of natural ecosystems and their ability to deliver services such as biodiversity, water, carbon storage and forest products. SBMPs include consideration of ecosystem resilience at a strategic level over the long term, particularly how we can measure it. However, FFMVic is working towards developing a more detailed understanding of how planned burning might impact flora and fauna, and how we can use fire to maintain and enhance ecosystem resilience into the future.

FFMVic policy defines *ecosystem resilience* as an ecosystem's capacity to absorb both natural and management-imposed disturbance but still retain its basic structure, function and identity.

In planning and measuring the environmental impacts of bushfire management, FFMVic uses Tolerable Fire Intervals (TFI) as a surrogate of ecosystem resilience. Additional measures relating to the Geometric Mean Abundance of species in a community and to Vegetation Growth Stage Structures will be recognised in the future FOPs.

Port Phillip Region, as a part of the East Central Bushfire Risk Landscape, has more specific landscape objectives to avoid ecologically significant area such as:

- Longest unburnt vegetation (oldest areas of an ecological vegetation class) to help vegetation types transition into older growth.
- Targeting areas within TFI, and avoiding areas below TFI wherever possible.
- Assessing the protection provided by the FOP to reduce bushfire risk, as well as the potential impact on key *Environment Protection and Biodiversity Conservation Act 1999* (EPBC Act) species and communities.
- Avoiding planned burning and ignition in Leadbeater's Possum habitat and identifying and protecting colonies.
- Identifying the growth stage distribution of areas targeted in each year of the FOP to avoid treating large areas of juvenile vegetation where such a fire regime is inappropriate.

**Table 2.** Estimated total area (ha) of Port Phillip below, within and above TFI following implementation of each FOP year.

Port Phillip Region 2017/18 FOP	Below TFI ha	Within TFI ha	Above TFI ha	No Recorded Fire History ha
<b>Year 1 (2018)</b>	117955	46854	4311	26588
<b>Year 2 (2019)</b>	87825	77139	4315	26429
<b>Year 3 (2020)</b>	87351	77751	4293	26313
<b>Total all years</b>	293130	201744	12919	79330

Across Port Phillip Region, a total of 293,130ha (approximately 50%) of the region is estimated to be below minimum TFI and 214,663ha (approximately 37%) is estimated to be either within or above maximum TFI at the completion of the three year FOP. In year one of the FOP approximately 117,955ha (60%) of the region is predicted to be Below TFI, with 46,854ha (24%) Within and 4,311ha (2%) Above TFI. The trend over the following years of the FOP is similar with the majority below TFI (45%) and the remainder either within TFI (40%) or above maximum TFI (2%) for years two and three of the FOP. This suggests that areas across Port Phillip are recovering post 2009 Black Saturday fires with a dramatic shift of areas Below TFI to Within TFI between years one and two of the FOP (24% year one to 40% in years two and three).

**Table 3.** Estimated area (ha) of Port Phillip Region being burnt below TFI, represented as a function of relationship with Fuel Management Zoning (FMZ).

Port Phillip Region 2017/18 FOP	APZ ha	BMZ ha	LMZ ha	PBEZ ha
<b>Year 1 (2018)</b>	75	44	26	0
<b>Year 2 (2019)</b>	161	189	28	0
<b>Year 3 (2020)</b>	76	832	12	4
<b>Total all years</b>	312	1065	65	4

Across the Port Phillip Region, a total of 1446ha is estimated to be burnt while below minimum TFI at the completion of the three year FOP. Of this the majority will occur in APZ (22%, 312ha) and BMZ (74%, 1065ha) areas; this is consistent with the broader ECBRL bushfire fuel management strategy which promotes the targeting of high risk areas, for risk reduction outcomes. Over the last 12 months ECBRL in conjunction with Port Phillip and some neighbouring DELWP Regions has implemented its bushfire fuel management strategy through a process of fire management zone review. The majority of the former "priority

fuel management areas” (PFMA) are now represented in the FMZs as either APZ or BMZ. There are however some areas in the Yarra catchment area within the PFMA which have not been implemented as yet.

**Table 4.** Estimated growth stage distribution (ha) throughout the Port Phillip Region, following implementation of the FOP.

Growth Stage across Port Phillip Region 2017/18 FOP	Juvenile ha	Adolescent ha	Mature ha	Old ha	No Recorded Fire History ha
<b>Year 1 (2018)</b>	59029	25871	78498	4263	26588
<b>Year 2 (2019)</b>	36599	39187	87512	4514	26429
<b>Year 3 (2020)</b>	34154	39093	90148	4544	26313
<b>Total all years</b>	129782	104151	256168	13321	79330

Across Port Phillip Region, it is predicted that the landscape will be almost evenly split between younger (40% Juvenile and Adolescent) and older (46% Mature and Old) vegetation growth stages after the completion of the three year FOP. Approximately 14% of the Region has No Fire History recorded, which means that the vegetation growth stage is unknown. This trend is similar for each of the three years of the FOP with 59,029ha (30%) in Juvenile and 78,498ha (40%) in Mature growth stages in year one (2018); 39,187ha (20%) in Adolescent and 87,512ha (45%) in Mature growth stages in year two (2019); and 39,093ha (20%) in Adolescent and 90,148ha (46%) in Mature growth stages in year three (2020). This data also suggests that there is predicted to be a shift from Juvenile vegetation to Adolescent over the next three years; which indicates ecosystems are recovering post the 2009 Black Saturday fires.

Across the whole of the ECBRL, of which Port Phillip Region is apart, the FOP has attempted to address the ecological objectives as mentioned above. The current Port Phillip Region FOP has been effective in addressing the ecological objectives by minimising areas being burnt below TFI, while at the same time targeting areas for burning in APZ and BMZs where risk reduction for human life and property is high. This is consistent with the ECBRL strategy, where areas of APZ and BMZ are prioritised for treatment as they have high risk reduction benefits. Conversely, areas of LMZ should only be targeted to meet ecological outcomes, i.e. to achieve a desired vegetation growth stage structure. The analysis above also indicates that despite the implementation of the FOP, areas in Port Phillip Region are recovering post 2009 Black Saturday fires with large areas transitioning from Juvenile to Adolescent growth stages.

Though it is not shown in the analysis above, areas of Leadbeater’s Possum Habitat have been incorporated into fire planning at a tactical or operational level. Identified habitat is excluded as much as practical from fuel management.

Unburnt vegetation provides critical habitat for a large range of taxonomic groups, especially immediately after adjacent areas are burnt. It acts as a resource for animals, which will then disperse as the burnt area regenerates. Long-unburnt vegetation has particular benefits, specifically hollows that form only in old trees and are used by arboreal mammals, birds, bats and reptiles. It is for this reason that across the ECBRL, of which Port Phillip, Hume and Gippsland Regions intersect, there have been areas chosen across different Ecological Vegetation Classes as “longest unburnt” (logging history is also considered) representative areas. These representative areas are considered in the FOP process and any potential negative impacts mitigated at a tactical level, i.e. burn exclusion. Across the ECBRL there are 10 planned burns (one in Port Phillip, six in Gippsland and three in Hume Regions) which contain these longest unburnt areas; as stated mitigations, will occur at a tactical level.

Across the ECBRL the Leadbeaters Possum *Gymnobelideus leadbeateri*, Long-nosed Potoroo *Potorous tridactylus*, Spotted Tailed Quoll *Dasyurus maculatus*, Southern Brown Bandicoot *Isoodon obesulus*, Smoky Mouse *Pseudomys fumeus* and Greater Glider *Petauroides volans* are priority species for the BRL to monitor both the impacts of planned burning and risk from bushfire. Most of this work is being undertaken as per an ongoing state-wide project aimed at assessing potential impacts on Matters of National Environmental Significance, stated later in this document. However, the Leadbeater’s Possum has been a particular priority species due to the predicted decline of the species and threat from fire, both planned and bushfire. Within the ECBRL in the Murrindindi, Yarra and Latrobe Districts, where the species occurs, any potential negative impacts from the FOP are mitigated at a tactical level using the species predicted habitat layer (LBP Occupancy Model) and tactical planning, i.e. burn exclusion.

This current FOP supports ecological priorities by containing approximately 1312 ha of ecological burning, which is aimed at either promoting or maintaining ecosystem function and species of specific vegetation communities (i.e. grasslands) and or ensuring diversity of growth stages across parts of the landscape. The Port Phillip Region FOP also supports ecological priorities by focusing burning activities in areas deemed of strategic importance for bushfire risk reduction and, outside of these areas, limits burning below TFI. Furthermore, areas that have been identified as Longest Unburnt have been mapped and will be excluded from planned burning at a tactical level by FFMVic fuel management teams. See Table 5 for an annual area summary of planned burning scheduled to be undertaken for ecological outcomes.

**Table 5.** Total area ha of fuel management (planned burning) scheduled for each year of the 2017/18 – 2019/20 FOP, for ecological outcomes.

	Year 1 (ha)	Year 2 (ha)	Year 3 (ha)	Total
<b>Metropolitan District</b>	386.6	577.5	307.7	1271.8
<b>Yarra District</b>	3.9	12.5	24.4	40.8
<b>Port Phillip Region</b>	390.5	590	332.1	1312.6

Potential impacts on species and communities listed under the EPBC Act or the Victorian Flora and Fauna Guarantee Act 1988 (FFG Act) have been addressed at the operational review stage of the FOP. Records of listed species from the Victorian Biodiversity Atlas were used to identify potential conflicts with proposed burns and works. Advice has been provided regarding the potential nature of any impacts, along with recommendations to eliminate, mitigate or minimise potential threats to these values during planned burning. DELWP is currently developing a strategic assessment process to identify, assess and mitigate potential impacts of the planned burning program on Matters of National Environmental Significance.

### Indigenous Burning in Port Phillip Region

There are three Traditional Cultural Heritage burns scheduled on the Port Phillip Region FOP, located in Paul Range, Yarra District, that will be delivered by FFMVic staff in conjunction with Wurundjeri Tribe Land and Compensation Cultural Heritage Council (WTLCCHC). These burns will be undertaken for social, cultural, and fuel reduction outcomes, and will directly allow the Aboriginal people of Wurundjeri to be involved in our work across landscapes, environment and communities.

These are the first Traditional Cultural Heritage planned burns to be included in a Port Phillip FOP. FFMVic and WTLCCHC are committed to nurturing a collaborative relationship that will increase the capacity for undertaking Indigenous burning within the Region, now and into the future.

### Melbourne Water Planned Burns

Melbourne Water (MW) undertake planned burning to provide protection outcomes for Melbourne’s water supply catchments, and to reduce the bushfire risk to human life and property in areas surrounding these catchments. MW have 17 burns planned to be undertaken during the next three years on land outside the Fire Protected Area. All planning, approvals and delivery of these burns is the responsibility of Melbourne Water and CFA. A complete list of these burns can be seen in Appendix iii. An area summary of MW planned burns is illustrated in Table 6 below. MW burns are included in this FOP for stakeholder and community notification purposes.

**Table 6.** Melbourne Water planned burns located in Port Phillip Region, scheduled for the 2017/18 – 2019/20 FOP.

	Year 1 (ha)	Year 2 (ha)	Year 3 (ha)	Total
<b>Melbourne Water</b>	639.6	419.8	543.1	1602.5

# Endorsement

The 2017/18 – 2019/20 Fire Operations Plan for the Port Phillip Region has been endorsed by the following DELWP staff:

## DELWP

Chief Fire Officer: Stephanie Rotarangi

Deputy Chief Fire Officer: Darrin McKenzie

A/ Assistant Chief Fire Officer Port Phillip Region: Shannon Devenish

The cross-tenure planned burns have been nominated in partnership with CFA, local Government and the community. Endorsement of these burns is via standard DELWP endorsement and approval processes.

Noting for on ground ignition and delivery of cross tenure burns, DEWLP and CFA agency responsibilities remain unchanged.

## Viewing the Port Phillip Region Fire Operations Plan

The 2017/18 – 2019/20 Fire Operations Plan for the Port Phillip Region can be viewed during normal business hours at the following office locations:

Location	Address
Powelltown	Main Road, Powelltown
Woori Yallock	7-11 Symes Road, Woori Yallock
Gembrook	10 Beenak East Road, Gembrook
Olinda	Woolrich Road, Olinda
Warrandyte	Pound Bend Road, Warrandyte
Knoxfield	609 Burwood Highway, Knoxfield
Rosebud	2 Hinton Street, Rosebud

### Viewing the Plan online:

You can view the Port Phillip Region Fire Operations Plan online at:

<http://www.ffm.vic.gov.au/bushfire-fuel-and-risk-management/fire-operation-plans>

### Upcoming burns

Burns that will be conducted within the next ten days (weather conditions permitting) can be viewed at: <http://www.ffm.vic.gov.au/bushfire-fuel-and-risk-management/planned-burns>

You can also sign up to the Planned burning notification system (PBNS) to receive automated SMS and email notifications about planned burns on public land when they are close to being carried out.



# How to become involved in the Fire Operations Planning Process

DELWP welcomes comment on fire management all year round, on all parts of the planning process – both strategic and operational. Please be aware that due to the planning cycle your comments relating to fire operations may be included in next year's Fire Operations Plan.

Comments and suggestions about DELWP fire management planning in Port Phillip can be sent to:

**Regional Fuel Management Coordination**

PO Box 264  
Woori Yallock  
Victoria, 3139

**Planned Burning Email contact details:**

Comments may also be sent by email to: [planned.burns@delwp.vic.gov.au](mailto:planned.burns@delwp.vic.gov.au)

# Appendix (i): Schedules of Activities

## YARRA DISTRICT SCHEDULE

### SCHEDULE 1: PLANNED BURNS

The activities in this schedule are planned burns.

Please note that the planned burn year and season identified for each planned burn is indicative only and may be changed due to weather conditions and operational requirements.

**Abbreviations in Schedule 2:** \*\*\* asterisk on burn name denotes a cross tenure burn; PV - Parks Victoria; COM - Committee of Management; DELWP- Department of Environment Land Water and Planning; PP – Private Property; MW – Melbourne Water; FRB - Fuel Reduction Burn; ECO - ecological burn; FMZ – Fire Management Zone; APZ - Asset Protection Zone; BMZ – Bushfire Moderation Zone; LMZ - Landscape Management Zone; PBEZ – Planned Burn Exclusion Zone; NZ -Not Zoned.

### Planned Burns 2017/18

Local Government Area	Burn Number	Burn Name	General Location	Land Manager	Burn Season	Burn Type (FRB/ECO)	Land Management Objective	FMZ	Planned Burn Size (ha)	New Burn Yes/No
Cardinia Shire	PP-YRA-GEM-0003	Beaconsfield - O'Neil Road**	2km S of Beaconsfield Upper	COM	Autumn	FRB	To develop fuel reduced areas of sufficient width and continuity to reduce the speed and intensity of bushfires.	NZ	57.7	No
Yarra Ranges Shire	PP-YRA-GEM-0011	Beenak - Hakea Road	0.1km E of Beenak	PV/PP	Autumn	FRB	To provide bushfire protection outcomes by reducing overall fuel hazard and bushfire hazard in the landscape.	LMZ	101.6	No
Yarra Ranges Shire	PP-YRA-PMW-0002	Camberville - Woods Point Road	10.5km NE of Upper Yarra Dam	PV	Autumn	FRB	To develop a fuel reduced area to the North of the Upper Yarra Dam.	BMZ	2346.3	No
Cardinia Shire	PP-YRA-GEM-0015	Cockatoo - Garden City Estate**	1.3km W of Cockatoo	PV/COM /PP	Autumn	FRB	To provide the highest level of localised protection to human life, property and community assets identified as highly valued including the Cockatoo township.	NZ	37.3	Yes
Yarra Ranges Shire	PP-YRA-POW-0019	East Warburton - Crooked Creek	4km E of East Warburton	DELWP	Autumn	FRB	To develop fuel reduced areas of sufficient width and continuity to reduce the speed and intensity of bushfires.	BMZ	1097.2	No
Yarra Ranges Shire	PP-YRA-POW-0023	Gilderoy - Torbet Road	1.5km S of Gilderoy	DELWP	Autumn	FRB	To build on protection works in the adjacent Asset Protection Zone.	BMZ	78.9	No

Yarra Ranges Shire	PP-YRA-POW-0004	Powelltown - Eucalyptus Drive	1km W of Powelltown	DELWP	Spring	FRB	To provide the highest level of localised protection to human life, property and community assets identified as highly valued including the Powelltown township.	APZ	25.9	No
Yarra Ranges Shire	PP-YRA-POW-0021	Three Bridges - Little Yarra Creek**	1km NW of Three Bridges	DELWP/PP	Spring	FRB	To develop fuel reduced areas of sufficient width and continuity to reduce the speed and intensity of bushfires.	NZ	17.5	No
Cardinia Shire	PP-YRA-GEM-0006	Tonimbuk - Dingo Ridge Track**	3km W of Tonimbuk	PV/PP	Autumn	FRB	To develop fuel reduced areas of sufficient width and continuity to reduce the speed and intensity of bushfires.	BMZ	219.0	No
Yarra Ranges Shire	PP-YRA-POW-0011	Toolangi - Glenwood Link Track	4km SW of Toolangi	DELWP	Autumn/Winter	ECO	To modify the vegetation abundance across the planned area to assist the promotion of localised grasses and understory species through indigenous burning practices.	LMZ	3.9	Yes
Yarra Ranges Shire	PP-YRA-POW-0005	Toolebewong - Nyora Road**	3km NNW of Mount Toolebewong	DELWP/PP	Autumn	FRB	To develop fuel reduced areas of sufficient width and continuity to reduce the speed and intensity of bushfires.	BMZ	145.8	No
Yarra Ranges Shire	PP-YRA-POW-0008	Warburton - Mt Little Joe Track**	3km W of Warburton	DELWP/PP	Autumn	FRB	To provide the highest level of localised protection to human life, property and community assets identified as highly valued including private assets in the Millgrove and Hooks Road area.	APZ	51.0	Yes
Yarra Ranges Shire	PP-YRA-POW-0020	Wesburn - Yarra Silvan Conduit**	1km E of Wesburn	DELWP/PP	Autumn	FRB	To provide the highest level of localised protection to human life, property and community assets identified as highly valued including the Wesburn and Old Warburton townships, in conjunction with other burns in the Mt Little Joe area.	APZ	5.0	No
Cardinia Shire	PP-YRA-GEM-0016	Emerald – Lawsons Road	1.5km NE of Emerald	PP	Spring	ECO/FRB	To modify the vegetation abundance across the planned area to assist the promotion of White Star Bush ( <i>Asterolasia asteriscophora</i> subsp. <i>albiflora</i> ).	NZ	1.5	Yes

## Planned Burns 2018/19

Local Government Area	Burn Number	Burn Name	General Location	Land Manager	Burn Season	Burn Type (FRB/ECO)	Land Management Objective	FMZ	Planned Burn Size (ha)	New Burn Yes/No
Yarra Ranges Shire	MW0048	Camberville - Bears Creek	13KM NE Reefton	PV	Autumn	FRB	To provide an irregular mosaic of areas of fuel reduction which will complement works in adjacent fuel management zones.	BMZ	1128.5	No
Yarra Ranges Shire	PT0051	Don Valley - Rifle Range	2km NE of Don Valley	DELWP	Autumn	FRB	To provide a high level of strategic protection to human life, property and highly valued assets in the Station Road area.	APZ	110.2	No
Cardinia Shire	GB0016	Gembrook - Gillwell**	1km N of Whites Corner	COM	Spring	FRB	To develop fuel reduced areas to reduce the spread of wildfire for the protection of Gillwell Scout Camp	BMZ	22.9	No
Cardinia Shire	GB0042	Gembrook - Reids Track	6km NE of Tonimbuk	PV	Autumn	FRB	To develop fuel reduced areas of sufficient width and continuity to reduce the spread of wildfire.	BMZ	267.4	No
Cardinia Shire	PP-YRA-GEM-0010	Gembrook - Ridge Track	4.6km NE of Gembrook	PV	Autumn	FRB	To develop fuel reduced areas of sufficient width and continuity to reduce the speed and intensity of bushfires.	BMZ	158.4	Yes
Yarra Ranges Shire	WY0005	Healesville - Rd 15	2.5km NE of Healesville	PV/MW	Autumn	FRB	To provide a high level of strategic protection to human life, property and highly valued assets in the vicinity of the Maroondah Dam.	APZ	85.6	No
Yarra Ranges Shire	PP-YRA-POW-0010	McMahons Creek - Cedar Crescent	1km S of McMahons Creek	DELWP	Spring	FRB	To provide the highest level of localised protection to human life, property and community assets identified as highly valued including the McMahons Creek township.	APZ	84.6	Yes
Yarra Ranges Shire	PP-YRA-POW-0007	McMahons Creek - Muddy Creek Road	4km S of McMahons Creek	DELWP	Autumn	FRB	To develop fuel reduced areas of sufficient width and continuity to reduce the speed and intensity of bushfires.	BMZ	795.2	No
Yarra Ranges Shire	PP-YRA-POW-0016	Millgrove - Warburton Highway	1km S of Millgrove	DELWP	Autumn	FRB	To provide the highest level of localised protection to human life, property and community assets identified as highly valued including properties in the Millgrove and Wesburn area.	APZ	71.6	Yes
Yarra Ranges Shire	PP-YRA-POW-0006	Reefton - Two Mile Creek	2km NE of McMahons Creek	DELWP	Autumn	FRB	To develop a fuel reduced area to the North of the Reefton CFA Station.	BMZ	2.6	No
Yarra Ranges Shire	PP-YRA-POW-0003	Three Bridges - Manna Gum Track	1.5km SW of Three Bridges	DELWP	Autumn	FRB	To develop fuel reduced areas of sufficient width and continuity to reduce the speed and intensity of bushfires.	BMZ	75.3	No
Yarra Ranges Shire	PP-YRA-POW-0002	Three Bridges - Mount Beenak	1.9km S of Three Bridges	DELWP	Autumn	FRB	To develop fuel reduced areas of sufficient width and continuity to reduce the speed and intensity of bushfires.	BMZ	185.3	No
Yarra	PP-YRA-	Toolangi -	3.2km SW of Toolangi	DELWP	Autumn/Winter	ECO	To modify the vegetation abundance across the	BMZ	12.5	Yes

Ranges Shire	POW-0018	Dixons Creek East Branch					planned area to assist the promotion of localised grasses and understory species through indigenous burning practices.			
Cardinia Shire	PP-YRA-GEM-0012	Tynong North - Pharoahs Gully Track	2.7km NE of Maryknoll	PV	Autumn	FRB	To develop fuel reduced areas of sufficient width and continuity to reduce the speed and intensity of bushfires.	BMZ	164.6	Yes



## Planned Burns 2019/20

Local Government Area	Burn Number	Burn Name	General Location	Land Manager	Burn Season	Burn Type (FRB/ECO)	Land Management Objective	FMZ	Planned Burn Size (ha)	New Burn Yes/No
Cardinia Shire	PP-YRA-GEM-0014	Cockatoo - Banksia Track	2.3km NW of Cockatoo	PV	Autumn	FRB	To provide the highest level of localised protection to human life, property and community assets identified as highly valued including the township of Cockatoo.	APZ	6.9	Yes
Yarra Ranges Shire	PP-YRA-POW-0024	Dixons Creek - Link Track	4km NE of Dixons Creek	DELWP	Autumn/Winter	ECO	To modify the vegetation abundance across the planned area to assist the promotion of localised grasses and understory species through indigenous burning practices.	BMZ	24.4	Yes
Cardinia Shire	GB0017	Gembrook - Clarkes Creek Track	3 KM NW OF Whites Corner	PV	Spring	FRB	To provide an irregular mosaic of areas of fuel reduction which will complement works in adjacent fuel management zones.	BMZ	38.7	No
Cardinia Shire	PP-YRA-GEM-0013	Gembrook - Lawless Creek	7.6km E of Gembrook	PV	Autumn	FRB	To develop fuel reduced areas of sufficient width and continuity to reduce the speed and intensity of bushfires.	BMZ	366.2	Yes
Cardinia Shire	GB0041	Gembrook - Yarrabubba Track	7km SE of Gembrook	PV	Autumn	FRB	To develop fuel reduced areas of sufficient width and continuity to reduce the spread of wildfire.	BMZ	216.6	No
Yarra Ranges Shire	WY0008	Healesville - Boxs Hill	5km E of Healesville	PV	Autumn	FRB	To develop fuel reduced areas of sufficient width and continuity to reduce the spread of wildfire.	BMZ	197.8	No
Yarra Ranges Shire	PP-YRA-POW-0015	McMahons Creek - MM Fireline	1km SW of McMahons Creek	DELWP	Autumn	FRB	To build on protection works in the adjacent Asset Protection Zone.	BMZ	617.5	Yes
Cardinia Shire	GB0036	Officer - Haunted Gully Road**	2.5km N of Officer	COM	Autumn	FRB	To develop fuel reduced areas of sufficient width and continuity to reduce the spread of wildfire.	NZ	14.2	No
Yarra Ranges Shire	PP-YRA-PMW-0005	Reefton - Doctors Creek	2.7kn NE of Reefton	DELWP	Autumn	FRB	To develop a fuel reduced area to the North West of Melbournes water supply catchment area (Upper Yarra) and associated infrastructure.	BMZ	1244.1	Yes
Yarra Ranges Shire	PT0054	Reefton - Yarra River	1km W of Reefton	DELWP	Autumn	FRB	To provide a high level of strategic protection to human life, property and highly valued assets in the Reefton township area.	BMZ	15.7	No
Yarra Ranges Shire	PT0052	Three Bridges - Barber Hill Track**	2km SE of Gladysdale	DELWP/PP	Autumn	FRB	To develop fuel reduced areas of sufficient width and continuity to reduce the spread of wildfire.	BMZ	266.4	No
Yarra Ranges	PT0049	Toolangi - Glenwood	3km E of Toolangi	DELWP	Autumn	FRB	To provide a high level of strategic protection to human life, property and highly valued assets in	APZ	21.3	No

Shire		Drive					the Glenwood Drive area.			
Yarra Ranges Shire	PT0043	Toolebewong - Chapman Road**	2km W of Mt Toolebewong	DELWP/PP	Autumn	FRB	To develop a fuel reduced corridor North West of Warburton Valley.	BMZ	143.7	No
Yarra Ranges Shire	PT0021	Wesburn - Yankee Jims Creek	1km W of Old Warburton	DELWP	Autumn	FRB	To provide an irregular mosaic of areas of fuel reduction which will complement works in adjacent fuel management zones.	APZ	31.3	No

## SCHEDULE 2: NON-BURN FUEL TREATMENTS 2017/18

The table below contains a summary of proposed non-burn fuel treatments over the following year. Some of these fuel treatments are annual, with others prioritised based on the seasonal conditions and which planned burns are scheduled. Accompanying maps provide detail on where these fuel treatment activities are located. Note that the maps show approximate areas only and the actual treatment area will be dependent on the condition of the fuels at the time of assessment. Please contact your local DELWP or Parks Victoria office if further detail is required.

Works by Land Manager	Parks Victoria (ha)	DELWP (ha)	Other (ha)
Hectares Planned	152.2	199.9	NIL

### SCHEDULE 3: NEW STRATEGIC FUELBREAKS 2017/18

DELWP and Parks Victoria work together to establish and maintain a network of strategic fuelbreaks to expand the protection of communities, forests and parks from the risk of bushfire. A strategic fuelbreak is a strip of land where vegetation has been modified to reduce the amount of fuel available to burn during a bushfire. Strategic fuelbreaks are an important tool for fire management on public land. They provide a fuel-reduced area from which to conduct back burning ahead of an approaching bushfire or to assist in the implementation of a planned burn.

Machinery is used to clear vegetation generally within a 15-20-metre-wide strip. In some instances, this width could be up to 40m. Existing roads and tracks are considered part of the clearing. Where possible, overstorey trees are retained to provide shading and connection between the trees for wildlife and landscape values. The locations of strategic fuelbreaks are included for information only. These activities are approved via other DELWP and Parks Victoria processes. CFA strategic fuel breaks are included in Municipal Fire Management Plans.

Strategic fuel break maintenance is an annual program and included in Schedule 2 above.

Road or Location Name	Locality	Operation Type	Distance (km)
-----------------------	----------	----------------	---------------

**No new Strategic Fuelbreaks are being constructed in the Yarra District.**

# Appendix (ii): Schedules of Activities

## METROPOLITAN DISTRICT SCHEDULE

### SCHEDULE 1: PLANNED BURNS

The activities in this schedule are planned burns.

Please note that the planned burn year and season identified for each planned burn is indicative only and may be changed due to weather conditions and operational requirements.

**Abbreviations in Schedule 1:** \*\*\* asterisk on burn name denotes a cross tenure burn; PV - Parks Victoria; COM - Committee of Management; DELWP- Department of Environment Land Water and Planning; PP – Private Property; MW – Melbourne Water; FRB - Fuel Reduction Burn; ECO - ecological burn; FMZ – Fire Management Zone; APZ - Asset Protection Zone; BMZ – Bushfire Moderation Zone; LMZ - Landscape Management Zone; PBEZ – Planned Burn Exclusion Zone; NZ -Not Zoned.

### Planned Burns 2017/18

Local Government Area	Burn Number	Burn Name	General Location	Land Manager	Burn Season	Burn Type (FRB/ECO)	Land Management Objective	FMZ	Planned Burn Size (ha)	New Burn Yes/No
Mornington Peninsula Shire	PP-MET-RBD-0004	Cape Schanck - Kadwell Brk	1.5km E of Cape Schanck	PV	Summer	ECO	To modify the vegetation structure across the planned area to assist the promotion of Coastal Woodland.	LMZ	22.7	No
Brimbank City	PP-MET-BBK-0003	Derrimut - Fitzgerald Rd South	MELWAYS 39 I8	PV	Autumn	ECO	To modify the vegetation structure across the planned area to assist the promotion of Basalt Grassland.	LMZ	20.0	No
Brimbank City	PP-MET-WDL-0004	Derrimut - Fulton Dr Sth	MELWAYS 39 E7	PV	Autumn	ECO	To modify the vegetation structure across the planned area to assist the promotion of Basalt Grassland.	LMZ	4.4	No
Nillumbik Shire	PP-MET-WSP-0005	Eltham - Laughing Waters Road**	3.5km ESE of Eltham	PV	Autumn	ECO	To provide bushfire protection outcomes by reducing overall fuel hazard and bushfire hazard in the landscape.	LMZ	5.5	No
Nillumbik Shire	PP-MET-WSP-0004	Eltham - Overbank Rd	4km ESE of Eltham	PV	Autumn	FRB	To develop fuel reduced areas of sufficient width and continuity to reduce the speed and intensity of bushfires.	BMZ	15.7	No
Yarra Ranges Shire	PP-MET-DRP-0023	Ferny Creek - Helen Trk	FERNY CREEK (MELWAYS 66 B10)	PV	Autumn	FRB	To provide the highest level of localised protection to human life, property and community assets identified as highly valued including residents in the vicinity of Hilton & Clarke Roads .	APZ	34.7	No
Yarra Ranges Shire	PP-MET-DRP-0022	Ferny Creek - Janesdell Ave	1km NW of Ferny Creek	PV	Autumn	FRB	To provide the highest level of localised protection to human life, property and community assets identified	APZ	19.5	No



							as highly valued including Ferny Creek & Tremont.			
Unincorporated	PP-MET-RBD-0010	French Island - Cemetery	5km ENE of Tankerton	PV	Autumn	ECO	To promote ecological resilience in Heathland (sands) (general) by manipulating the growth stage distribution.	LMZ	47.7	No
Unincorporated	PP-MET-RBD-0009	French Island - Mcleod West	FRENCH ISLAND (VICMAP 6875 C7)	PV	Autumn	ECO	To modify the vegetation structure across the planned area to assist the promotion of Heathland (sands) (general).	LMZ	241.3	No
Hume City	PP-MET-WDL-0024	Greenvale - Woodlands Hill South	2km SW of GREENVALE	PV	Autumn	FRB	To modify the vegetation structure across the planned area to assist the promotion of Basalt Grassland.	LMZ	18.2	Yes
Hume City	PP-MET-WDL-0008	Greenvale-Moonee Ponds Creek	GREENVALE (MELWAYS 178 A10)	PV	Spring	ECO	To modify the vegetation structure across the planned area to assist the promotion of Basalt Grassland.	LMZ	10.7	No
Yarra Ranges Shire	PP-MET-LYS-0006	Lysterfield-Ryans Road West	2.4km E of Lysterfield	PV	Autumn	FRB	To develop a fuel reduced area to the West of residents in the vicinity of Ryans Road	BMZ	8.2	No
Yarra Ranges Shire	PP-MET-DRP-0003	Montrose - Mountain Crescent	3km E of Montrose (Melways 52 J7)	PV	Spring	FRB	To provide the highest level of localised protection to human life, property and community assets identified as highly valued including properties in the vicinity of Mount Dandenong Tourist Road and Mountain Crescent.	APZ	21.5	No
Melton City	PP-MET-WDL-0022	Mount Cotterell - Troups Rd East	5km NE of Mount Cotterell	PV	Autumn	ECO	To modify the vegetation structure across the planned area to assist the promotion of Basalt Grassland.	LMZ	22.4	No
Yarra Ranges Shire	PP-MET-DRP-0013	Mt Dandenong - Kyeema Trk	4km NW of Olinda (Melways 52 E12)	PV	Autumn	FRB	To provide the highest level of localised protection to human life, property and community assets identified as highly valued including Sky High Restaurant, B & Bs and private residents along Ridge Road & Observatory Road.	APZ	54.5	No
Yarra Ranges Shire	PP-MET-DRP-0025	Olinda - Barges Tk	3.5km NE of OLINDA	PV	Autumn	FRB	To develop a fuel reduced area to the South West of Silvan Water treatment plant and the Olinda township to the East.	BMZ	69.1	No
Yarra Ranges Shire	PP-MET-DRP-0020	Olinda - Basin / Olinda Rd	0.7km W of Olinda	PV	Autumn	FRB	To provide the highest level of localised protection to human life, property and community assets identified as highly valued including Olinda township.	APZ	6.8	No
Mornington Peninsula Shire	PP-MET-RBD-0008	Point Nepean - Harrisons Bowl	POINT NEPEAN - MELWAYS 166 K9	PV	Autumn	ECO	To modify the vegetation abundance across the planned area to assist the control of Coastal Tea Tree.	LMZ	1.8	No
Mornington Peninsula Shire	PP-MET-RBD-0007	Point Nepean - Wilsons Folley East	POINT NEPEAN - MELWAYS 167 A11	PV	Autumn	ECO	To modify the vegetation abundance across the planned area to assist the control of Coastal Tea Tree.	LMZ	2.2	No
Melton City	PP-MET-WDL-0021	Ravenhall - Robinsons Road	1km E of Ravenhall	PV	Autumn	FRB	To modify the vegetation structure across the planned area to assist the promotion of Basalt Grassland.	LMZ	24.7	Yes
Yarra Ranges	PP-MET-	Sassafras -	1.3km N of Sassafras	PV	Autumn	FRB	To provide the highest level of localised protection to	APZ	6.8	No

Shire	DRP-0021	Aurora Rise						human life, property and community assets identified as highly valued including residents of olinda township and surrounds.			
Nillumbik Shire	PP-MET-WSP-0003	St Andrews - Flora Cr	0.5km NE of St Andrews	PV	Autumn	ECO		To modify the vegetation structure across the planned area to assist the promotion of Grassy/Heathy Dry Forest.	LMZ	7.7	No

## Planned Burns 2018/19

Local Government Area	Burn Number	Burn Name	General Location	Land Manager	Burn Season	Burn Type (FRB/ECO)	Land Management Objective	FMZ	Planned Burn Size (ha)	New Burn Yes/No
Mornington Peninsula Shire	PP-MET-RBD-0003	Arthurs Seat - Purves Road	.5km W of Arthurs Seat	PV	Autumn	FRB	To provide the highest level of localised protection to human life, property and community assets identified as highly valued including residents and businesses in the vicinity of Purves Road and Pindara Road.	APZ	8.2	Yes
Brimbank City	EC000364	Brimbank - River Trail	MELWAYS 14 J11	PV	Autumn	ECO	To modify the vegetation structure across the planned area to assist the promotion of basalt grassland EVD.	LMZ	13.7	No
Brimbank City	PP-MET-WDL-0028	Cairnlea - Dunbarrim Ave**	1.5km SW of Cairnlea	COM*	Spring	FRB	To modify the vegetation structure across the planned area to assist the promotion of Basalt Grassland.	NZ	3.1	Yes
Brimbank City	EC000432	Cairnlea - Magazine Av**	0.5km N of Cairlea	COM*	Spring	ECO	To provide conditions for the establishment of native grassland species in densities at least double than present within 2yrs of burning.	NZ	6.6	No
Whittlesea City	EC000438	Craigieburn - O'Herns Rd West	MELWAYS 180 G4	PV	Autumn	ECO	To modify the vegetation structure across the planned area to assist the promotion of basalt grassland EVD.	LMZ	56.7	No
Yarra Ranges Shire	DR0021	Ferny Creek - Alpine Road	0.5km NNW of Ferny Creek	PV	Autumn	FRB	To provide a high level of strategic protection to human life, property and highly valued assets in the vicinity of Seebreeze Ave, Alpine Rd and Highview Rd.	APZ	30.1	No
Unincorporated	SWP0016	French Island - Pinnacles North	4km NNE of Tankerton	PV	Autumn	ECO	To provide conditions for rejuvenation EVC present, to encourage persistence of Key Fire Response Species within 2 years of burning.	LMZ	203.0	No
Whittlesea City	PP-MET-PTG-0003	Greensborough - Wanbanna Ave	2km NW of Greensbrough	PV	Autumn	FRB	To develop a fuel reduced area to the North East of residents in the vicinity of Wanbanna Ave and Corowa Cr.	LMZ	11.3	Yes
Hume City	PP-MET-WDL-0023	Greenvale - Homestead Tk	3km W of Greenvale	PV	Autumn	FRB	To modify the vegetation structure across the planned area to assist the promotion of Basalt Grassland.	LMZ	17.4	Yes
Hobsons Bay City	EC000412	Laverton - East	MELWAYS 54 A3	PV	Autumn	ECO	To modify the vegetation structure across the planned area to assist the promotion of basalt grassland EVD.	LMZ	25.7	No
Wyndham City	EC000451	Laverton North - William Angliss	5.2km N of Laverton	PV	Autumn	ECO	To modify the vegetation structure across the planned area to assist the promotion of basalt	LMZ	16.0	No

							Dr	grassland EVD.			
Casey City	PN0029	Lynbrook - Pattersons Drive North	1.3km S of Lynbrook	PV	Autumn	ECO	To reduce weed infestations to allow for follow up management and to provide a distribution of EVC growth stages within the landscape.	LMZ	4.3	No	
Knox City	PP-MET-LYS-0004	Lysterfield South - Tramline Walk	1.5km NE of Lysterfield South	PV	Autumn	FRB	To provide the highest level of localised protection to human life, property and community assets identified as highly valued including houses to the west of West Boundary Track near Cloverdale Lane, Bellbird place & Hallam North Road.	APZ	24.7	Yes	
Melton City	PP-MET-WDL-0025	Mount Cottrell - Troups Road West	5km NE of Mount Cottrell	PV	Autumn	FRB	To modify the vegetation structure across the planned area to assist the promotion of Basalt Grassland.	LMZ	21.0	Yes	
Yarra Ranges Shire	PP-MET-DRP-0018	Mount Dandenong - Kyeema Track East	3km NE of Olinda	PV	Autumn	FRB	To provide the highest level of localised protection to human life, property and community assets identified as highly valued including Sky High restaurant, B & B's and private residents along Ridge and Observatory Road.	APZ	9.2	Yes	
Hume City	PP-MET-WDL-0016	Mount Ridley - West	MELWAYS 366 E9	PV	Autumn	ECO	To modify the vegetation structure across the planned area to assist the promotion of Basalt Grassland.	LMZ	13.5	No	
Yarra Ranges Shire	EC000159	Mt Dandenong - Trig Trk	1km NE of Mount Dandenong	PV	Autumn	FRB	To provide a high level of strategic protection to human life, property and highly valued assets such as Sky High, numerous B & B's and private residence along Ridge road and Observatory road.	APZ	41.6	No	
Yarra Ranges Shire	EC000162	Mt Dandenong - Tv Towers	1.5km WSW of Mount Dandenong	PV	Autumn	FRB	To provide a high level of strategic protection to human life, property and highly valued assets, particularly to the television towers at the top of Mt Dandenong.	APZ	32.0	No	
Wyndham City	PP-MET-WGR-0003	Quandong - Ballan Rd	MELWAYS 226 A12	PV	Autumn	ECO	To modify the vegetation structure across the planned area to assist the promotion of Basalt Grassland.	LMZ	196.6	No	
Melton City	EC000421	Ravenhall - Riding Boundary Rd	3km S of Ravenhall	PV	Autumn	ECO	To modify the vegetation structure across the planned area to assist the promotion of basalt grassland EVD.	LMZ	26.2	No	
Yarra Ranges Shire	EDR0061	Silvan - Melba Track	1km NW of Silvan	PV	Autumn	FRB	To provide a high level of strategic protection to human life, property and highly valued assets in the vicinity of Monbulk Road and Silvan Rd.	BMZ	58.7	No	
Hume City	PP-MET-WDL-0020	Somerton - Cooper St Central	MELWAYS 7 K1	PV	Autumn	ECO	To modify the vegetation structure across the planned area to assist the promotion of Basalt Grassland.	LMZ	15.2	No	
Nillumbik Shire	PP-MET-WSP-0007	St Andrews - Sutton Street	.5km NW of St Andrews	PV	Autumn	FRB	To develop a fuel reduced area to the North of St Andrews township.	BMZ	19.7	Yes	
Manningham City	PP-MET-WSP-0010	Warrandyte - David Road	.5km S of Warrandyte	PV	Autumn	FRB	To provide the highest level of localised protection to human life, property and community assets identified	APZ	4.1	Yes	

---

as highly valued including residents in the vicinity of David and Webb Streets and the Warrandyte township.

---

## Planned Burns 2019/20

Local Government Area	Burn Number	Burn Name	General Location	Land Manager	Burn Season	Burn Type (FRB/ECO)	Land Management Objective	FMZ	Planned Burn Size (ha)	New Burn Yes/No
Brimbank City	PP-MET-WDL-0026	Derrimut - Boundary Rd	MELWAYS 39 K7	PV	Autumn	ECO	To modify the vegetation structure across the planned area to assist the promotion of Basalt Grassland.	LMZ	24.0	No
Unincorporated	SWP0015	French Island - Link Track	7.5km NE of Tankerton	PV	Autumn	ECO	To provide conditions for rejuvenation EVC present, to encourage persistence of Key Fire Response Species within 2 years of burning.	LMZ	111.6	No
Unincorporated	SWP0017	French Island - Pinnacles South	3.5km N of Tankerton	PV	Autumn	ECO	To provide conditions for rejuvenation EVC present, to encourage persistence of Key Fire Response Species within 2 years of burning.	LMZ	104.7	No
Unincorporated	PP-MET-RBD-0006	French Island - Prison Boundary Tk	15km NE of Tankerton	PV	Autumn	FRB	To modify the vegetation abundance across the planned area to assist the control of Pinus pinaster.	LMZ	275.5	Yes
Yarra Ranges Shire	PP-MET-DRP-0016	Kalorama - Old Coach Rd	0.3km NE of Kalorama	PV	Autumn	FRB	To provide the highest level of localised protection to human life, property and community assets identified as highly valued including property in the vicinity of Old Coach Road, Jasper Road and Thompsons Road.	APZ	10.7	Yes
Hobsons Bay City	EC000413	Laverton - West	MELWAYS 53 J4	PV	Autumn	ECO	To modify the vegetation structure across the planned area to assist the promotion of basalt grassland EVD.	LMZ	20.9	No
Wyndham City	PP-MET-WDL-0015	Laverton North - Boundary Rd	5.7km N of Laverton	PV	Autumn	ECO	To modify the vegetation structure across the planned area to assist the promotion of Basalt Grassland.	LMZ	5.8	No
Yarra Ranges Shire	EC002909	Lysterfield - Sunset Trk	2km ENE of Lysterfield	PV	Autumn	FRB	To provide an irregular mosaic of areas of fuel reduction which will complement works in adjacent fuel management zones.	BMZ	32.0	No
Melton City	EC000397	Mount Cottrell - Boundary Rd	2.3km SE of Mount Cottrell	PV	Autumn	ECO	To modify the vegetation structure across the planned area to assist the promotion of basalt grassland EVD.	LMZ	40.8	No
Yarra Ranges Shire	EC000265	Mt Dandenong - Dandenong Ck Trk	1.8km SSW of Mount Dandenong	PV	Summer	FRB	To provide a high level of strategic protection to human life, property and highly valued assets in the vicinity of Viola Ave, Toroa and Range Roads.	APZ	16.7	No
Yarra Ranges Shire	D50	Mt Dandenong - Doongalla Forest	2km SW of Mount Dandenong	PV	Autumn	FRB	To develop fuel reduced areas of sufficient width and continuity to reduce the spread of wildfire in the	BMZ	32.2	No

vicinity of Kyeema Track										
Yarra Ranges Shire	PP-MET-DRP-0019	Olinda - Ridge Track	1.5km W of Olinda	PV	Autumn	FRB	To build on protection works in the adjacent Asset Protection Zone.	BMZ	44.1	Yes
Yarra Ranges Shire	PP-MET-DRP-0026	Olinda - Road 16	4km NE of Olinda	PV	Autumn	FRB	To develop a fuel reduced area to the South West of Silvan water treatment plant.	BMZ	31.4	Yes
Yarra Ranges Shire	EC000283	Sassafras - School Trk	1.3km NW of Sassafras	PV	Autumn	FRB	To provide a high level of strategic protection to human life, property and highly valued assets in the vicinity of Aurora Rise, Mason Grove and Chudleigh Crescent	APZ	25.9	No
Yarra Ranges Shire	EDR0058	Sassafrass - Caterpillar Trk	1.6km NW of Sassafras	PV	Autumn	FRB	To provide a high level of strategic protection to human life, property and highly valued assets in the vicinity of Dodds Rd and Basin-Olinda Rd.	APZ	24.9	No
Yarra Ranges Shire	EDR0060	Sassafrass - Wannawong	0.9km NW of Sassafras	PV	Autumn	FRB	To provide a high level of strategic protection to human life, property and highly valued assets in the vicinity of Mountain Highway and Heathersett Rd.	APZ	9.5	No
Nillumbik Shire	PP-MET-WSP-0009	St Andrews - Pindari Road	.5km E of St Andrews	PV	Autumn	FRB	To provide the highest level of localised protection to human life, property and community assets identified as highly valued including St Andrews township.	APZ	13.8	Yes
Manningham City	PP-MET-WSP-0006	Warrandyte - Pigtail Track	1.1km SE of Warrandyte	PV	Autumn	FRB	To provide the highest level of localised protection to human life, property and community assets identified as highly valued including residents adjoining Harding & Pigtail roads.	APZ	10.9	Yes



## SCHEDULE 2: NON-BURN FUEL TREATMENTS 2017/18

The table below contains a summary of proposed non-burn fuel treatments over the following year. Some of these fuel treatments are annual, with others prioritised based on the seasonal conditions and which planned burns are scheduled. Accompanying maps provide detail on where these fuel treatment activities are located. Note that the maps show approximate areas only and the actual treatment area will be dependent on the condition of the fuels at the time of assessment. Please contact your local DELWP or Parks Victoria office if further detail is required.

Works by Land Manager	Parks Victoria (ha)	DELWP (ha)	Other (ha)
Hectares Planned	962.0	NIL	NIL

### SCHEDULE 3: NEW STRATEGIC FUELBREAKS 2017/18

DELWP and Parks Victoria work together to establish and maintain a network of strategic fuelbreaks to expand the protection of communities, forests and parks from the risk of bushfire. A strategic fuelbreak is a strip of land where vegetation has been modified to reduce the amount of fuel available to burn during a bushfire. Strategic fuelbreaks are an important tool for fire management on public land. They provide a fuel-reduced area from which to conduct back burning ahead of an approaching bushfire or to assist in the implementation of a planned burn.

Machinery is used to clear vegetation generally within a 15-20-metre-wide strip. In some instances, this width could be up to 40m. Existing roads and tracks are considered part of the clearing. Where possible, overstorey trees are retained to provide shading and connection between the trees for wildlife and landscape values. The locations of strategic fuelbreaks are included for information only. These activities are approved via other DELWP and Parks Victoria processes. CFA strategic fuel breaks are included in Municipal Fire Management Plans.

Strategic fuel break maintenance is an annual program and included in Schedule 2 above.

Road or Location Name	Locality	Operation Type	Distance (km)
-----------------------	----------	----------------	---------------

**No new Strategic Fuelbreaks are being constructed in the Metropolitan District.**

# Appendix (iii): Schedules of Activities

## MELBOURNE WATER SCHEDULE

### SCHEDULE 1: PLANNED BURNS

The activities in this schedule are planned burns.

Melbourne Water, in conjunction with the CFA, undertakes several planned burns on the Country Area of Victoria.

Please note that the planned burn year and season identified for each planned burn is indicative only and may be changed due to weather conditions and operational requirements.

**Abbreviations in Schedule 1:** MW – Melbourne Water; FRB - Fuel Reduction Burn; ECO - ecological burn; FMZ – Fire Management Zone; NZ -Not Zoned.

### Planned Burns 2017/18

Local Government Area	Burn Number	Burn Name	General Location	Land Manager	Burn Season	Burn Type (FRB/ECO)	Land Management Objective	FMZ	Planned Burn Size (ha)	New Burn Yes/No
Yarra Ranges Shire	MWSL03B	Melbourne Water Silvan - PB03B	2.8km NW of Burleigh	MW	Autumn	FRB	To develop fuel reduced areas of sufficient width and continuity to reduce the spread of wildfire.	NZ	78.7	No
Yarra Ranges Shire	MWSL06	Melbourne Water Silvan - PB06	0.5km W of Silvan	MW	Autumn	FRB	To enhance protection of significant assets and reduce potential spread and damage from westerly travelling bushfire	NZ	56.8	No
Nillumbik Shire	MWSG06	Melbourne Water Sugarloaf - PB06	8km SW Yarra Glen	MW	Autumn	FRB	Reduce bark Hazard and risk of ember attack, direct flames and radiant heat to protect Winneke Treatment Plant	NZ	37.9	No
Whittlesea City	MWYY03	Melbourne Water Yan Yean - PB03	4.5km SE of Whittlesea	MW	Autumn	FRB	Reduce fuels on eastern boundary of Yan Yean reservoir area in order to reduce flame intensity to Arthurs Creek and Nillumbik communities in the event of a bushfire.	NZ	229.9	No
Whittlesea City	MWYY08	Melbourne Water Yan Yean - PB08	4km SE of Whittlesea	MW	Autumn	FRB	Reduce fuel loads within burn unit, control weed spread as well as to minimise bushfire spread through elevated fuel loads in the reservoir area.	NZ	159.0	No
Cardinia Shire	MWCA01	Melbourne Water Cardinia - BB01	1.8km SW of Emerald	MW	Autumn	ECO	To treat area for Burgan removal and rough heap removed vegetation. Burn heaps and slash.	NZ	10.6	Yes
Cardinia Shire	MWCA07	Melbourne Water Cardinia - PB07	1.5km S of Emerald	MW	Autumn	FRB	Reduce fuel loads & intensities to catchment entry road and Emerald Township on a SW influence	NZ	66.7	Yes

## Planned Burns 2018/19

Local Government Area	Burn Number	Burn Name	General Location	Land Manager	Burn Season	Burn Type (FRB/ECO)	Land Management Objective	FMZ	Planned Burn Size (ha)	New Burn Yes/No
Wyndham City	MWGRS02	Melbourne Water Grassland - Paul & Belfrage`S Swamp	5.6km E of Little River	MW	Autumn	ECO	To provide conditions for the establishment of native grasses at densities at least double than present within 2 years of burning.	NZ	189.9	Yes
Yarra Ranges Shire	MWSL05	Melbourne Water Silvan - PB05	4km S of Silvan	MW	Autumn	FRB	Reduce fuels and possibility of bushfire spread to built up areas, including human settlements and infrastructure.	NZ	13.3	No
Nilumbik Shire	MWSG04	Melbourne Water Sugarloaf - PB04	5km SW of Yarra Glen	MW	Autumn	FRB	Reduce overall fuel hazard to protect power substation from ember attack and flames, increase protection of Yering Gorge pump station from spotting emanating from a bushfire.	NZ	35.1	No
Whittlesea City	MWYY04	Melbourne Water Yan Yean - PB04	3km SE of Whittlesea	MW	Autumn	FRB	To reduce flammability between fuel types in the Eastern vs Western section of Yan Yean Reservoir.	NZ	82.3	No
Whittlesea City	MWYY05	Melbourne Water Yan Yean - PB05	4km E of Whittlesea	MW	Autumn	FRB	Reduce fuels on predicted southerly bushfire path to Humevale and access roads and reduce fire intensities within catchment boundaries.	NZ	71.8	No
Cardinia Shire	MWCA06	Melbourne Water Cardinia - PB06	2km SE of Emerald	MW	Autumn	FRB	This burn block reflects the likely fire path given current fuel loads under Extreme FDIs, and fire run towards Emerald township	NZ	27.5	No

## Planned Burns 2019/20

Local Government Area	Burn Number	Burn Name	General Location	Land Manager	Burn Season	Burn Type (FRB/ECO)	Land Management Objective	FMZ	Planned Burn Size (ha)	New Burn Yes/No
Wyndham City	MWGRS03	Melbourne Water Grassland - Ryan`S Swamp	5.1km SE of Little River	MW	Autumn	ECO	To provide conditions for the establishment of native grasses at densities at least double than present within 2 years of burning	NZ	233.6	Yes
Yarra Ranges Shire	MWSL04	Melbourne Water Silvan - PB04	1.9km NW of Burleigh	MW	Autumn	FRB	To provide a high level of strategic protection to human life, property, and Silvan Reservoir.	NZ	85.2	Yes
Whittlesea City	MWYY06	Melbourne Water Yan Yean - PB06	5km SE of Whittlesea	MW	Autumn	FRB	Reduce fuels on eastern boundary of Yan Yean reservoir area in order to reduce bushfire flame intensity to Arthurs Creek and to Cheery Tree Rd WPS (Yarra Valley Water).	NZ	207.1	No
Cardinia Shire	MWCA04	Melbourne Water Cardinia - PB04	1.3km SW of Emerald	MW	Autumn	FRB	To develop fuel reduced areas of sufficient width and continuity to reduce the spread of wildfire.	NZ	17.3	Yes

# Appendix (IV): Schedules of Activities

## MELBOURNE FIRE AND EMERGENCY PROGRAM SCHEDULE

### SCHEDULE 1: PLANNED WORKS

The activities in this schedule are planned works.

**Abbreviations in Schedule1:** MFEP - Melbourne Fire and Emergency Prrogram

#### Planned Burns 2017/18

Program	Locality	Work Number	Work Name	Delivery Year	Work Type	Land Manager
MFEP	Cardinia/Sandbelt	BA101	Wellington Rd South	2017/2018	Roads/Tracks Improvement	Parks Victoria
MFEP	Cardinia/Sandbelt	MFEP562	Logan Track East	2017/2018	Crossing/Culvert	Parks Victoria
MFEP	Dandenong Ranges	DR240	Dunedia Tk	2017/2018	Roads/Tracks Improvement	Parks Victoria
MFEP	Dandenong Ranges	DR273	Viola Ave	2017/2018	Roads/Tracks Improvement	Parks Victoria
MFEP	Dandenong Ranges	MFEP233	VW Tk	2017/2018	Roads/Tracks Improvement	Parks Victoria
MFEP	Dandenong Ranges	MFEP235	Jasper	2017/2018	Roads/Tracks Improvement	Parks Victoria
MFEP	Dandenong Ranges	MFEP365	Sunset Ave	2017/2018	Roads/Tracks Improvement	Parks Victoria
MFEP	Dandenong Ranges	MFEP374	Inverness Tk	2017/2018	Crossing/Culvert	Parks Victoria
MFEP	Dandenong Ranges	MFEP483	Jack Montgomerys	2017/2018	Fuelbreak Improvement	Parks Victoria
MFEP	Dandenong Ranges	MFEP521	Boundary Rd	2017/2018	Roads/Tracks Improvement	Parks Victoria
MFEP	Dandenong Ranges	MFEP532	Eagles Nest Tk	2017/2018	Roads/Tracks Improvement	Parks Victoria
MFEP	Dandenong Ranges	MFEP533	Boundary Tk	2017/2018	Crossing/Culvert	Parks Victoria
MFEP	Dandenong Ranges Gardens	MFEP498	Silvan Rd	2017/2018	Roads/Tracks Improvement	Parks Victoria
MFEP	Gembrook	GE32	Unnamed	2017/2018	Roads/Tracks Improvement	Parks Victoria
MFEP	Gembrook	GE35	Helmet Tk	2017/2018	Roads/Tracks Improvement	Parks Victoria
MFEP	Gembrook	GE39	Lupton Tk	2017/2018	Fuelbreak New	Parks Victoria
MFEP	Gembrook	MFEP398	Ash Landing Rd	2017/2018	Crossing/Culvert	Parks Victoria

MFEP	Gembrook	MFEP402	Black Snake Creek Rd	2017/2018	Gate	Parks Victoria
MFEP	Gembrook	MFEP496	Tarrana St	2017/2018	Fuelbreak Improvement	Parks Victoria
MFEP	Gembrook	MFEP497	Allenby Ave	2017/2018	Fuelbreak Improvement	Parks Victoria
MFEP	Gembrook	MFEP509	Black Snake Creek Rd	2017/2018	Crossing/Culvert	Parks Victoria
MFEP	Gembrook	MFEP517	Bray Rd	2017/2018	Roads/Tracks Improvement	Parks Victoria
MFEP	Gembrook	MFEP538	Sand Pit Ridge Tk	2017/2018	Roads/Tracks Improvement	Parks Victoria
MFEP	Gembrook	MFEP568	Towt Rd	2017/2018	Fuelbreak Improvement	Parks Victoria
MFEP	Gembrook	MFEP569	Bunyip Ridge Tk	2017/2018	Fuelbreak Improvement	Parks Victoria
MFEP	Gembrook	MFEP572	Reids Track	2017/2018	Crossing/Culvert	Parks Victoria
MFEP	Gembrook	MFEP573	Ash Landing Rd	2017/2018	Crossing/Culvert	Parks Victoria
MFEP	Keilor Plains	MFEP556	Swain Tk	2017/2018	Roads/Tracks Improvement	Parks Victoria
MFEP	Keilor Plains	MV24	Boundary Rd	2017/2018	Fuelbreak Improvement	Parks Victoria
MFEP	Middle Yarra and Plenty	MFEP352	Calwell Road	2017/2018	Fuelbreak Improvement	Parks Victoria
MFEP	Middle Yarra and Plenty	MFEP353	Tower Tk	2017/2018	Gate	Parks Victoria
MFEP	Middle Yarra and Plenty	MFEP549	Glynns Tk	2017/2018	Roads/Tracks Improvement	Parks Victoria
MFEP	Middle Yarra and Plenty	MFEP570	Mt Lofty West	2017/2018	Roads/Tracks Improvement	Parks Victoria
MFEP	Middle Yarra and Plenty	MY162	Boomers Tk	2017/2018	Gate	Parks Victoria
MFEP	Middle Yarra and Plenty	MY177	Roberts Rd	2017/2018	Roads/Tracks Improvement	Parks Victoria
MFEP	Northern Peninsula	MFEP332	Friends Tk	2017/2018	Roads/Tracks Improvement	Parks Victoria
MFEP	Northern Peninsula	MFEP552	Concept Spur Break	2017/2018	Roads/Tracks Improvement	Parks Victoria
MFEP	Werribee Plains	MFEP524	Mount Cottrell - Western Block	2017/2018	Fuelbreak Improvement	Parks Victoria
MFEP	Yarra Ranges	MFEP492	O'Shannassy Aqueduct/ Parrot Rd	2017/2018	Roads/Tracks Improvement	Parks Victoria
MFEP	Yarra Ranges	MFEP505	Road 18	2017/2018	Roads/Tracks Improvement	Parks Victoria
MFEP	Yarra Ranges	MFEP506	O'Shannassy Aqueduct/ Parrot Rd	2017/2018	Fuelbreak Improvement	Parks Victoria



# Appendix (V): Fire Management Zones

## AMENDMENTS TO FIRE MANAGEMENT ZONES

The following changes to Fire Management Zones are proposed. Your feedback, comments or suggestions of alternative zone proposals are welcomed.

### Proposed changes to Fire Management Zones

District	Location	Current Zone	Area (ha)	Proposed Zone	Justification for Amendment
Metropolitan	1.8 km South of Frankston	Not Zoned	90.1	Land Management Zone	The currently named Frankston Nature Conservation Reserve, which is currently managed under COM, will in future be managed by Parks Victoria. This land will become Fire Protected Area, and will require zoning. LMZ

# Glossary

This glossary provides information on terms contained within the body of this document and the schedules.

**Burn Type** – indicates the primary purpose of the burn including fuel reduction burn (FRB), ecological burn (ECO).

**Burn Number and Name**– the unique identifier for each burn or planned fuel management activity.

**Cross-tenure burn** – burns that cover both public and private land

**Fire Management Zone (FMZ)** – an area of land in which fire is managed for specific asset, fuel and ecological objectives. Values included in this column can be APZ - Asset Protection Zone; BMZ – Bushfire Moderation Zone; LMZ - Landscape Management Zone, PBEZ – Planned Burn Exclusion Zone; or, NZ -Not Zoned.

**Forest Fire Management Victoria (FFMVic)** - consists of specialist staff from DELWP, Parks Victoria, Melbourne Water and Vic Forests.

**Indicative Burn Season** – indicates the preferred season in which the burn will be completed. Actual delivery may be any time of the year.

**Land Manager** – the organisation responsible for day-to-day management of the works site – DELWP (Department of Environment Land Water and Planning); PV (Parks Victoria).

**Land Management Objective** - identifies the desired land management outcome(s) of the burn.

**Local Government Area (LGA)** – the municipality in which the majority of the fuel management activity is located.

**Location** – a direction and distance of the planned burn from the nearest major township/locality.

**Planned Burns** - Planned burning is one of DELWP's most important fire prevention activities. It involves the controlled application of fire during periods of lower fire risk, to achieve one of three main purposes: fuel reduction, ecological management and forest regeneration.

It is important to understand that planned burning operations, particularly fuel reduction burns, do not stop or eliminate the risk of bushfires. However, Victorian research, and similar information from other parts of Australia and overseas, clearly shows that firefighters have a much better chance of managing bushfires in areas where fuel reduction burns have been carried out.

Approved burns in this year's Plan will require a range of preparation works to make the planned area ready to ignite when the weather and other conditions are right. Preparation works may include, brushing up or grading of existing boundaries and internal tracks, management of hazardous trees, the construction and preparation of boundary and control lines with machinery and pest plant controls. The preparation works will have on-site inspections which will assess the surrounding assets and planned burn objectives.

**Planned Burn Size** – the maximum area of the fuel management activity measured in hectares (ha), including areas specifically excluded from disturbance.

**Strategic Fuelbreak:** A strategic fuelbreak is a strip of land where vegetation has been modified to reduce the amount of fuel available to burn during a bushfire.

**New Burn**– 'YES' = New burn did not appear on last year's FOP. 'NO' = Not a new burn. Burn was approved in the previous (2016/17- 2018/19) Fire Operations Plan but has not been carried out, it is included in this FOP and may be conducted at any time.

**Non-Burn Fuel Treatments** – Non burn fuel treatments such as the maintenance and construction of fire control lines, fire access tracks, fuel breaks, fire infrastructure and other fuel management activities are required to support the planned burning program. Treatments to achieve these works can include slashing, pruning, chemical application (in alignment with safety standards), grazing or other operations (such as ploughing, mulching or rolling) that may be more appropriate or practical in certain areas. For example, fuel on small areas or blocks located within townships may be treated mechanically, where burning is impractical. These methods may also be more suitable in certain vegetation types.

