



# Fire Operations Plan 2017/18 – 2019/20

Loddon Mallee Region

Environment,  
Land, Water  
and Planning

**FOREST FIRE  
MANAGEMENT VICTORIA**

### **Acknowledgements**

Thank you to the Murray Mallee Goulburn, South West and West Central Bushfire Risk Landscape teams, Mallee and Murray Goldfields District teams and the Loddon Mallee Regional Fuel Management Team members for all their input.

### **Author**

Loddon Mallee Regional Fuel Management Team  
Bendigo Office  
1 Taylor Street Epsom VIC 3551  
Phone No. 5430 4444  
Fax No. 5448 4982  
Email: [loddonmallee.plannedburning@delwp.vic.gov.au](mailto:loddonmallee.plannedburning@delwp.vic.gov.au)

### **Photo credit**

Paul Hitch

© The State of Victoria Department of Environment, Land, Water and Planning 2016



This work is licensed under a Creative Commons Attribution 4.0 International licence. You are free to re-use the work under that licence, on the condition that you credit the State of Victoria as author. The licence does not apply to any images, photographs or branding, including the Victorian Coat of Arms, the Victorian Government logo and the Department of Environment, Land, Water and Planning (DELWP) logo. To view a copy of this licence, visit <http://creativecommons.org/licenses/by/4.0/>

ISBN 978-1-76047-730-1 (pdf/online)

### **Disclaimer**

This publication may be of assistance to you but the State of Victoria and its employees do not guarantee that the publication is without flaw of any kind or is wholly appropriate for your particular purposes and therefore disclaims all liability for any error, loss or other consequence which may arise from you relying on any information in this publication.

### **Accessibility**

If you would like to receive this publication in an alternative format, please telephone the DELWP Customer Service Centre on 136186, email [customer.service@delwp.vic.gov.au](mailto:customer.service@delwp.vic.gov.au), or via the National Relay Service on 133 677 [www.relayservice.com.au](http://www.relayservice.com.au). This document is also available on the internet at [www.delwp.vic.gov.au](http://www.delwp.vic.gov.au).

# Contents

<b>Assistant Chief Fire Officer Foreword</b> .....	<b>4</b>
<b>Purpose and objectives of the Loddon Mallee Region Fire Operations Plan</b> .....	<b>5</b>
<b>Purpose</b> .....	<b>5</b>
<b>Objective</b> .....	<b>6</b>
<b>Strategic Bushfire Management Planning</b> .....	<b>6</b>
<b>Bushfire Risk Reduction</b> .....	<b>8</b>
<b>Working with communities</b> .....	<b>9</b>
<b>Mallee Fire District</b> .....	<b>9</b>
<b>Maintaining and enhancing Ecosystem Resilience</b> .....	<b>10</b>
<b>Other objectives specific to the Loddon Mallee Region</b> .....	<b>12</b>
<b>Endorsement</b> .....	<b>13</b>
<b>Viewing the Loddon Mallee Region Fire Operations Plan</b> .....	<b>13</b>
<b>How to become involved in the Fire Operations Planning Process</b> .....	<b>14</b>
<b>Appendix (i): Schedules of Activities</b> .....	<b>15</b>
<b>Mallee DISTRICT SCHEDULE</b> .....	<b>15</b>
<b>Murray Goldfields DISTRICT SCHEDULE</b> .....	<b>24</b>
<b>Glossary</b> .....	<b>36</b>



# Assistant Chief Fire Officer Foreword

The Department of Environment, Land, Water and Planning (DELWP) in collaboration with Parks Victoria (PV) has developed this Fire Operations Plan (FOP) to outline where fuel management activities will be undertaken on public land across the Loddon Mallee Region. It is designed to implement DELWP's long term strategic bushfire management plans that outline how we will manage the risk of bushfires, while maintaining and improving natural ecosystems.

*Safer Together: A new approach to reducing the risk of bushfire in Victoria* outlines the Victorian Government approach to reducing the risks of bushfire. It focuses on how effective our actions are in reducing risk, not just the amount of activity we undertake and aims for a more integrated approach across public and private land.

It commits the Victorian Government to maintaining bushfire risk at or below 70% across the state. This FOP outlines how fuel management activities in the Loddon Mallee Region will contribute to meeting this state-wide risk reduction target as well as those for maintaining ecosystem health. It has been shaped by a variety of information, such as risk-based planning detailed within our strategic bushfire management plans, specialist input from Forest Fire Management Victoria (FFMVic\*) staff and key industries, as well as knowledge from local communities and key stakeholders such as the CFA and local councils.

*Safer Together* also commits the CFA and FFMVic to working more closely to deliver the best bushfire risk reduction outcomes for Victorians. In recognising that bushfire risk occurs across all land, we have identified cross-tenure burns on this FOP that cover both public and private land. These will primarily be led by FFMVic staff with CFA assisting in the planning and delivery. Over time, CFA and FFMVic burns will be planned more collaboratively as the two agencies continue to work closely together.

At present, CFA planned burns on private land are documented in Municipal Fire Management Plans held by the relevant local government authority. Municipal Fire Management Plans also include roadside and railway side burns where applicable. These burns are not listed or part of this plan.

Fuel management is one of the most effective ways to reduce the impacts of bushfires to communities and the environment.

FFMVic staff work with interest groups and the wider community to understand how planned burns may impact people and industries and to gain important local knowledge to better plan and deliver fuel management activities. Based on feedback and local knowledge from local communities and key stakeholders, we review and update the Loddon Mallee Region Fire Operations Plan each year. We may make changes to burns or other fuel management activities, however our highest priority in carrying out fuel management activities is always the need to reduce the impact of bushfires on life and property.

I would like to acknowledge the significant work that has been put into developing this Fire Operations Plan, both by FFMVic staff and their local communities, and I encourage your continued input to ensure our plans protect those assets and values which are important to all Victorians.



**Scott Falconer**

Assistant Chief Fire Officer DELWP, Loddon Mallee Region

\* Forest Fire Management Victoria (FFMVic), consists of specialist staff from DELWP, Parks Victoria, Melbourne Water and Vic Forests.

# Purpose and objectives of the Loddon Mallee Region Fire Operations Plan

## Purpose

The maps and schedules contained within this Fire Operations Plan set out where and when fuel management activities are planned to occur for the period 2017/18 to 2019/20 within the Loddon Mallee Region.

These activities are carried out to reduce bushfire fuels – like leaves, twigs, bark and grass – to make bushfires less intense so that firefighters have a better chance of protecting communities. Activities are also done to maintain the health of ecosystems that rely on fire to regenerate.

It is important to note that the ability to carry out burns is dependent on seasonal and local weather conditions. To allow for this, planned burns from the second and third years of the Plan may be brought forward to the current year to replace a burn planned for the first year.

This document consists of District sub-plans and contains the following schedules:

**Schedule 1 – Planned Burns.** This schedule lists planned fuel reduction, ecological and other planned burns by indicative year for the three-year period.

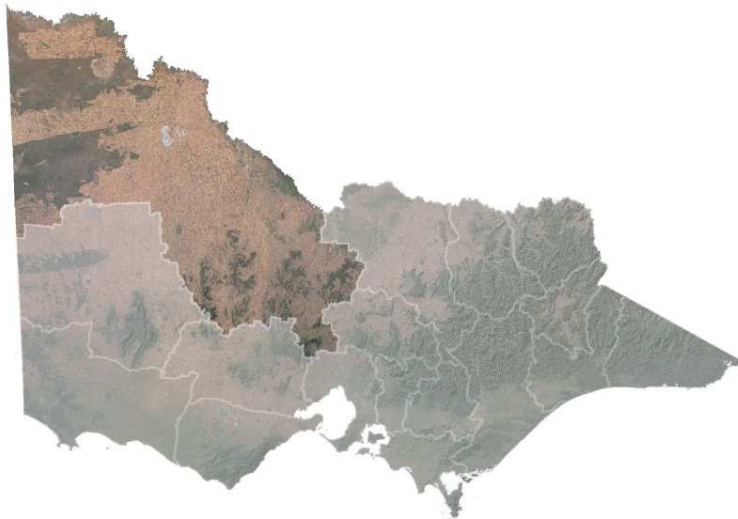
**Schedule 2 – Non-Burn Fuel Treatments.** This schedule lists the program that uses methods other than burning to achieve the fuel management objectives.

**Schedule 3 – Strategic Fuelbreaks.** This schedule provides an overview of strategic fuelbreaks to be constructed during the three-year period. The locations of strategic fuelbreaks are included for information only. These activities are approved via other DELWP and Parks Victoria processes.

The following Districts are part of the Loddon Mallee Region:

Mallee District	Murray Goldfields District
-----------------	----------------------------

**Map 1: Loddon Mallee Region**



Burns associated with logging regeneration as well as small heap and grass burns are not included in the Fire Operation Planning process.

The Fire Operations Plan is prepared, and will be implemented in accordance with the *Code of Practice for Bushfire Management on Public Land 2012* (the Code), *Safer Together: A new approach to reducing the risk of bushfire in Victoria* and relevant FFMVic Instructions, Manuals and Guidelines.

## Objective

The Loddon Mallee Region FOP has been developed to implement strategies set out in DELWP's strategic bushfire management plans which address DELWP's legal obligations, policy commitments and objectives, including:

- bushfire risk reduction to protect human life and property,
- maintaining and enhancing ecosystem resilience, and
- achieving other desired outcomes as identified by communities.

**The activities within the Loddon Mallee Region FOP are designed to balance outcomes across all objectives.**

## Strategic Bushfire Management Planning

In consultation with CFA and communities, DELWP has developed long-term strategic bushfire management plans to identify where it is best to undertake fire management to achieve the above objectives.

The strategies apply four Fire Management Zones (FMZ) as described in the Code. This zoning establishes the primary objective for fuel management in different areas of the landscape and include:

**Asset Protection Zone (APZ):** where intensive fuel management provides the highest level of localised protection to human life and property;

**Bushfire Moderation Zone (BMZ):** where there is fuel management to reduce the speed and intensity of bushfires, either close to towns or as they spread through the landscape;

**Landscape Management Zone (LMZ):** where fuel management is done to reduce fuel hazard, improve ecosystem resilience and manage the land for particular uses (such as forest regeneration and water catchment protection); and

**Planned Burning Exclusion Zone (PBEZ):** where there is no planned burning, mainly to protect areas that can't tolerate fire.

The zones and other strategies in strategic bushfire management plans inform the development of the FOP. They are used to determine where fuel management activities need to be carried out over the next three-year period to meet the longer-term strategy's objectives, if weather and other conditions permit.

Burns are planned across all available fire management zones (APZ, BMZ and LMZ) for maintaining bushfire risk to desired levels. It is just as important to carry out planned burns in remote areas, as fires can start in these areas and spread to threaten houses and communities.

Fuel treatment, in the form of planned burning and slashing/mowing works, will be focused on the north west and south west of communities as this is the direction the worst bushfires approach from. Generally, more intense fuel treatment will be carried out close to communities in Asset Protection Zones (APZ) to mitigate direct flame and ember impacts.

Additionally, fuel treatment in Bushfire Moderation Zones (BMZ) will build on the Asset Protection Zones because the primary aim in both of these zones is bushfire protection. These are priority areas for fuel treatment to protect vulnerable communities and to reduce the spread of major bushfires. Less intense fuel

treatment will be undertaken further from communities, in order to reduce the size and spread of bushfires. These areas are often zoned as Landscape Management Zones and fuel treatment in them supports bushfire protection and ecological outcomes.

### Mallee Fire District

In the large Mallee parks the majority of fuel reduction work is planned to support the creation of strategic fire breaks. These breaks are generally 1km wide and are located strategically to reduce the likelihood of large fires developing over multiple days. This strategy aims to reduce the negative impact large fires can have on ecological resilience and the ability of these fires to become uncontrollable that can exit the parks and threaten communities in its vicinity.

Fuel treatment work is also planned in strategic areas on the edge of the Mallee Parks. These works support the strategy by reducing the likelihood of fires exiting the parks in areas where they could impact communities. The works planned to reduce the risk to high risk communities on the edge of the Wyperfeld National Park near Hopetoun and Rainbow, and on the edge of the Murray Sunset National Park near Murrayville and Walpeup are an example of this.

Areas with high fuel hazard in close proximity to at risk communities have been prioritised for treatment to reduce the intensity, and ember attack of possible fires. The works planned at Berriwillock, Walpeup, Murrayville and Yaapeet, Rainbow and others are examples of this.

### Murray Goldfields Fire District (MGFD)

In the Murray Goldfields, burns to the west of Wedderburn and north west of Inglewood target the most at risk communities in the districts north. The Wedderburn/Inglewood area has been prioritised because it is a high risk area due to its proximity to large patches of native vegetation. Most burns are planned to either the north west or south west of the communities as on a typical bad fire day this is the direction the worst bushfires approach from. South west of Inglewood, a planned burn has been positioned on the NW facing slope to limit the potential for large fires to build in intensity and strength south west of the community. These areas are all identified as high priority by the Mallee Murray Goulburn Bushfire Risk Landscape team and are consistent with the long-term strategy.

The Murray Goldfields FOP targets areas of public land that are classified as BMZ within the South Western Bushfire Risk Landscape's Strategic Bushfire Management Plan. Burns are planned within the Pyrenees Ranges to the north-west of Amphitheatre, and within Kara Kara National Park and Redbank Nature Conservation Reserve, which are adjacent to the communities of Moonambel and Redbank. These burns will help to reduce the bushfire risk to these communities.

The Murray Goldfields FOP is highly consistent with the West Central Bushfire Risk Landscape strategy. APZ and BMZ burns at Mount Macedon are vital in protecting the Murray Goldfields highest risk townships within the Macedon Corridor, and we are focusing on slowly introducing more fuel treatment within this area. A large APZ burn, supplemented by the adjacent BMZ burn at Mount Macedon will significantly reduce the risk to this community and to identified assets including local infrastructure and the primary school.

Three burns to the north west of Castlemaine provide the highest level of protection to this identified high priority community. Castlemaine is among the most at risk townships within the district, and the current FOP balances the need to reduce bushfire risk with ecological needs and community values.

Burns at Marong and Lockwood provide the highest level of protection to the identified priority areas of Kangaroo Flat and Mandurang by reducing landscape level risk within the district, and mitigating the impacts of plume driven fires before they can develop. More than 4,500Ha of planned burns occur in identified priority fuel management areas in each year of the FOP, and there is minimal burning planned in LMZ areas.

Minimalization of broad landscape burning supports the West Central and Mallee Murray Goldfields BRL strategies as

- The vegetation is not fire dependent.
- APZ / BMZ has been arranged to treat areas of high risk to life and property
- Strategy supports only burning in LMZ where an ecological, or risk objective has been identified

### **Bushfire Risk Reduction**

*Safer Together: A new approach to reducing the risk of bushfire in Victoria* sets out the Victorian Government's commitments to reducing the risk of bushfire in Victoria. It adopts a risk reduction target to guide fuel management, maintaining bushfire risk at or below a residual risk of 70% in the long-term.

Residual risk, is the risk, on average, that bushfires will impact on life and property across the landscape. It is expressed as the percentage of the risk that remains after bushfire history and fuel management (mainly planned burning) activities are considered.

Each DELWP District works towards managing the local risk on public land which collectively will meet the statewide risk reduction target.

Risk reduction is measured using Residual Risk, which is the risk, on average, that bushfires will impact on life and property across the landscape. It is expressed as the percentage of the risk that remains after bushfire history and fuel management (mainly planned burning) activities are considered.

The current residual risk for the West Central, South West and Mallee Murray Goulburn Risk Landscapes, (which comprise Loddon Mallee Region), is below the targets set in the Strategic Bushfire Management Plans (SBMPs). Residual risk in the Mallee Fire District is comprised of 81%, and 61% in the Murray Goldfields Fire District.

The statewide FOP is anticipated to reduce residual risk by 14% compared to the level it would reach without fuel management, and maintain residual risk below the statewide target of 70%. The Loddon Mallee FOP contributes a 1% statewide reduction in residual risk.

The Loddon Mallee FOP will treat 80,432Ha over 3 years if fully implemented, and contribute 11.7% to the state wide *Safer Together* commitment of 230,000Ha per annum.

The Loddon Mallee FOP will see residual risk rise to 66% by 2021, but reduces risk by 12.4% compared to the level it would reach without fuel management. Implementation of the FOP will see residual risk in the Mallee decrease to 79% and rise in the Murray Goldfields (MGFD) to 66% by 2021. The MGFD has historically maintained risk above 80%, but in 2015 this fell to an all-time low of 60%, following years of targeted planned burns and a 5% burning target. As fuels reaccumulate in these areas risk levels will rise, but priority burns in high risk areas will maintain community safety at the highest possible level. Areas where risk is returning will be re-burnt once sufficient time has passed for adequate fuel accumulation and/or maintenance of ecosystem health.

Through our work implementing *Safer Together* in the community, a strong sense of place within the Murray Goldfields community has been identified. Within our community there is a strong desire to protect key fire response species, improve biodiversity and strengthen resilience within our forests. By minimising the amount of broad scale LMZ burning, and focusing predominantly on either ecological or research opportunities, we are meeting the community recommendations and upholding values identified in *Safer Together* activities. We are working with local environmental groups and stakeholders to improve our understanding of vegetative response to fire in fire independent ecosystems. The large LMZ burn at Bealiba will be used as a monitoring site for this process.

As well as a risk reduction target, *Safer Together* also commits to DELWP and CFA sharing responsibility for cross-tenure fuel management with private landholders and local government. In the past, DELWP managed bushfire risk on public land only and CFA on private land, whereas *Safer Together* is about transitioning to delivering burns together, regardless of land tenure.



While this FOP covers predominantly planned burning on public land, several cross-tenure planned burns are also included, where fuel management based on risk has been identified.

Where cross-tenure burns have been included on this FOP, representatives from either/or both CFA and DELWP have worked collaboratively with the relevant landholder(s) to plan the burn. Burns conducted partially or wholly on private land are always undertaken with the landholder's consent.

In future, we aim to have a greater number of private land burns where risk assessment indicates it is needed. More private landholders will be involved in fuel management strategy development, and they and the CFA will be empowered to conduct burns on private land with the support of FFMVic.

### **Working with communities**

Managing bushfire risk is an ongoing and shared responsibility in which everyone has a role. To work well with communities to manage bushfire risk, DELWP operates under the principles of the *DELWP Community Charter* and CFA operates under the *CFA Service Delivery Strategy 2015-2020*.

In the Loddon Mallee Region, DELWP and CFA form partnerships with each other to work with communities, while each agency also maintains relationships with communities independent of each other. Under *Safer Together*, partnerships between DELWP, CFA, local government and other agencies will continue to be enhanced so that communities receive the best level of service.

DELWP works all year round with communities to understand and reduce bushfire risk. As a part of delivering Safer Together, DELWP has worked with many stakeholders and partners to develop the FOP, including Parks Victoria, CFA, Traditional Owner groups, Local Government, environment and community groups.

Community stakeholders have provided input through open house events, listening posts, stakeholder specific meetings including those with the Victorian Apiarists' Association, wine industries and environmental groups. They have also provided input by responding to specific FOP presentations as well as more general engagement on our fuel management and environmental strategies. The Mallee Fire Advisory Committee has provided valuable input throughout the year. This local knowledge has been incorporated into determining where planned burns take place, how they should be delivered and what values need protection. The FOP will have most impact on wine growing areas such as the Macedon, Heathcote and Pyrenees communities. It will also impact on the Inglewood, Wedderburn, Murrayville and Walpeup communities and we will be working with these communities to manage this.

### Mallee Fire District

The Mallee and Murray Goulburn Bushfire Risk Landscape have identified priority communities at the highest risk from fires exiting the Mallee parks which include Murrayville, Yaapeet, Hopetoun and Walpeup.

The Mallee Fire Advisory Committee (MFAC) comprises FFMVic, CFA and PV along with local landholders, apiarists and environmentalists. MFAC considers and advises FFMVic and PV on strategies and tactics for fire management in the Mallee. It is a conduit for engagement by reporting to and from the communities and interests that members represent, and gives an opportunity for members to directly input into the FOP. MFAC has influenced the way we carry out the internal and edge fuel breaks, and two burns at Hattah and Murray Sunset are on hold pending the outcome of a research project to determine impacts of fire on Mallee Emu-wren and other species.

We presented the FOP to Mallee CMA, the Big Desert Fire Conference, apiarists and BirdLife Australia. From this engagement, it was noted that apiarists were concerned smoke would affect the bees that pollinate almond trees. As a result, we have moved a burn originally scheduled for spring to a more acceptable time.

There are no formal Community Based Bushfire Management (CBBM) communities in the Mallee and we use MFAC as our means of community engagement and FOP endorsement. We are planning FOP community meetings for Hopetoun, Walpeup and Murrayville this September.

Two cross-tenure fuel management sites will be burned this Spring in the Mallee. One is on the Wyperfeld – Wirribibial Track where we have worked with an adjoining landholder. Rainbow Common is in State Forest under a committee of management, and we burn the grassland yearly for township protection in conjunction the local CFA brigade.

We work with local CFA brigades in delivering our planned burns, but this can be challenging as many burns are remote and occur during work hours. We supported a CFA led burn at Merbein this year, and will involve them at the Woorlong wetlands burn this spring (weather permitting).

#### Murray Goldfields Fire District (MGFD)

Priority communities for engagement in the Murray Goldfields include Kangaroo Flat, Castlemaine, Wedderburn, Inglewood and Macedon. Most of these communities have been targeted as locations to hold FOP open house events. These have been held in the past however for this year the sessions have been expanded to include many more topics and management activities undertaken by MGFD. These events provide meaningful opportunities for the community to engage with FFMVic around fuel management and have input into the FOP.

As a result of community input an area of public land underwent a zoning amendment to become a landscape management zone and increase the amount of time between fuel treatments to better manage the ecological value of the land. It is worth noting however, that most stakeholder/community input results in additional exclusion areas for particular values or a reduction in burn size. In some instances, such as Castlemaine-Kalimna Park, the area originally nominated is burnt over a series of burning seasons to accommodate community and environmental group values.

Within the Murray Goldfields there is also two active Community Based Bushfire Management (CBBM) initiatives at Benloch and in the Macedon Corridor, specifically at the townships of Heskett and Kerrie. Benloch CBBM has been established for a significant period of time and as a result of the work done here three projects have been agreed upon and driven by the community. These projects include; property information gathering, roadside vegetation management and a community fuel reduction program.

In the Macedon corridor, agency staff from CFA, FFMVic, PV and the Macedon Ranges Shire have had three successful stakeholder meetings where various potential projects have been discussed including strategic fire breaks, roadside vegetation management, cross-tenure fuel management and community education.

### **Maintaining and enhancing Ecosystem Resilience**

DELWP is committed to “*maintain or improve the resilience of natural ecosystems and their ability to deliver services such as biodiversity, water, carbon storage and forest products*” (the Code). Strategic bushfire management plans include consideration of ecosystem resilience at a strategic level over the long term, particularly how we can measure it. However, DELWP is working towards developing a more detailed understanding of how planned burning might impact flora and fauna, and how we can use fire to maintain and enhance ecosystem resilience into the future.

#### Mallee Fire District

For the Mallee Fire District the primary objective of the FOP is to reduce the likelihood of high intensity bushfires from burning large areas of the public land estate. Within this objective, it is intended that less than 10% of the district be below minimum tolerable fire interval ( $TFI_{min}$ ) at any one time.

The ( $TFI_{min}$ ) is the minimum number of years between fires for a vegetation community to recover and reach maturity to reproduce and for all animal populations to recover. Repeated burning below  $TFI_{min}$  will lead to ecosystem exhaustion and very low levels of ecosystem resilience. To achieve the highest ecosystem resilience in the Mallee Fire District over 90% of the vegetation must be in the mature to late growth stages. Currently 13.1% of the Mallee Fire District is within the two youngest growth stages of juvenile and adolescent and 29% of the Mallee Fire District is at or below  $TFI_{min}$ .

Animal populations respond/recover from fires and these responses can be graphed over time to produce “response curves”. Response curves can vary between species. Some species such as rodents recover relatively quickly after fire (i.e. <20 years) whereas species such as Black-eared Miners and Malleefowl require older growth vegetation at 60-80 years after fire. Across the landscape there will be a diversity of stands of vegetation of differing ages (i.e. times since fire or (growth stages)). Overall the landscape needs

to have the largest proportions of vegetation in late and mature growth stages to have a high level of Ecosystem Resilience.

The goal of the FOP is to reduce the likelihood of large scale bushfires developing and there by simplifying the growth stage structure to mostly recently burnt which leads to a landscape with low ecosystem resilience. In the two largest sub-landscapes (Murray Sunset/Hattah-Kulkyne (MSHK) and Big Desert/Wyperfeld (BDW)) full implementation of the FOP will reduce median bushfire size by 93% MSHK and by 60% in BDW.

The Mallee Fire District is unique with 37% of its threatened species (both flora and fauna) being endemic to this region. This is the largest proportion and number of endemic fire sensitive threatened species of any Region in Victoria. Most of these prefer mature and late growth stage vegetation in order to survive and thrive. The other ecological priority is excluding bushfires from the fire sensitive vegetation communities, most notably the EPBC listed Semi-arid Woodlands and Riparian Woodlands.

This FOP aims to continue the implementation and maintenance of a network of strategic fuel reduced corridors within the large public land blocks of the Mallee system. These corridors are designed to limit the size and frequency of large high intensity bushfires. Parts of the FOP also are intended to protect from fire, fire sensitive areas such as Semi-arid Woodlands and flood plain woodlands.

### Murray Goldfields Fire District

In the Murray Goldfields Fire District we are aiming to protect long unburnt habitat and avoid burning vegetation under minimum Tolerable Fire Interval (TFI). Further we are aiming to promote a diversity of fire histories in our landscape by spatially and temporally arranging burns across the Murray Goldfields.

Tolerable fire intervals (TFIs) are the minimum and maximum recommended times between fire events for a particular vegetation community. Burning regularly outside these intervals increases the risk that there will be fundamental changes in the abundance and composition of species, and the type of vegetation. We use TFIs as an initial surrogate measure of risk to ecosystem resilience across the landscape, and as an input to decisions about how often, when and where to conduct planned burning. Due to a recent increase in planned burning, particularly in 2011, 2014 and 2015, around 20% of the Murray Goldfields forest is currently below TFI. The FOP will only focus on these areas again if they are close to property or towns and will reduce the risk of bushfire.

The growth stage of vegetation depends on when it was last burnt, or subject to other disturbance. Each vegetation type over time passes through distinct stages following disturbance, each stage differing in the quality of the habitat it provides for plants and animals. Lack of diversity of growth stages in a landscape may reduce the ecosystem's capacity to resist damage and maintain its basic structure and type, after being disturbed by fire. DELWP is working towards using vegetation growth stages to help measure ecosystem resilience.

The proportion of vegetation in the younger growth stages (juvenile and adolescent) has increased over the last decade due to an increase in planned burning. There is currently a small amount of the Murray Goldfields Fire District in the old growth stage; however, around half of the District has no fire history and so could be assumed to be in the old growth stage.

The FOP supports ecosystem resilience by: avoiding burning in ecologically high value fire sensitive areas in the landscape; minimising the area burnt while below TFI across the landscape; promoting a mix of vegetation growth stages to provide a range of habitat for fauna, which includes maintaining longer unburnt vegetation across all vegetation types; spatially and temporally arranging burns across the landscape to ensure that larger patches of connected habitat is retained, and; applying measures at each burn to mitigate impacts on threatened species associated with mechanical disturbance and planned burning.

Areas around Bendigo, Maryborough, Heathcote and Castlemaine with slow-growing understory vegetation and tree hollows, both of which are commonly lost in a bushfire, placing priority species such as the barking owl, the hooded robin and the brush-tailed phascogale at risk. To support these ecological priorities, we aim to protect older forest, identify and implement mitigation measures for these priority species and their habitats that occur within planned burns.

The FOP aims to improve ecosystem resilience by minimising LMZ burns without specific ecological objectives. The large burn at Bealiba (~5000ha) will focus on improving knowledge around the ecosystem resilience and fire response of Box Ironbark Forest. The patchy burning techniques and different intensities of applied fire that will be employed will promote different vegetation communities throughout the burn and will give the opportunity to assess forest recovery under different burn conditions.

How does the FOP consider EPBC and FFG Act values?

Potential impacts on species and communities listed under the Commonwealth Environment Protection and Biodiversity Conservation Act 1999 (EPBC Act) or the Victorian Flora and Fauna Guarantee Act 1988 (FFG Act) have been addressed at the operational review of the draft Fire Operations Plans. Records of listed species from the Victorian Biodiversity Atlas were used to identify potential conflicts with proposed burns and works. Advice has been provided regarding the potential nature of any impacts, along with recommendations to eliminate, mitigate or minimise potential threats to these values during planned burning. DELWP is currently developing a strategic assessment process to identify, assess and mitigate potential impacts of the planned burning program on Matters of National Environmental Significance.

**Other objectives specific to the Loddon Mallee Region**

The FOP supports Traditional Burning in the Loddon Mallee through the addition of burns in partnership with Dja Dja Wurrung and Barapa Barapa. We have a strong commitment to working with Traditional Owners to help heal country and facilitate the reintroduction of Aboriginal fire practices into the future.



## Endorsement

The 2017/18 – 2019/20 Fire Operations Plan for the Loddon Mallee Region has been endorsed by the following DELWP staff:

### DELWP

Chief Fire Officer: Stephanie Rotarangi

Deputy Chief Fire Officer: Darrin McKenzie

Assistant Chief Fire Officer Loddon Mallee Region: Scott Falconer

The cross-tenure planned burns have been nominated in partnership with CFA and the community. Endorsement of these burns is via standard DELWP endorsement and approval processes.

Noting for on ground ignition and delivery of cross tenure burns, DELWP and CFA agency responsibilities remain unchanged.

## Viewing the Loddon Mallee Region Fire Operations Plan

The 2017/18 – 2019/20 Fire Operations Plan for the Loddon Mallee Region can be viewed during normal business hours at the following office locations:

Location	Address
DELWP Bendigo/Epsom	Cnr Midland Hwy & Taylor Street
DELWP Heathcote	28 Herriot Street (Wed 9am-4pm)
DELWP Maryborough	2/82 Alma Street (Mon, Tue, Wed only, closed during lunch)
DELWP Irymple	Cnr Koorlong Ave & Eleventh Street
DELWP Swan Hill	324 Campbell Street
Parks Victoria Hattah	Information Centre
Parks Victoria Robinvale	Higgins Road
Parks Victoria Rainbow	6679 Dimboola – Rainbow Road

### Viewing the Plan online:

You can view the Loddon Mallee Region Fire Operations Plan online at:  
<http://www.ffm.vic.gov.au/bushfire-fuel-and-risk-management/fire-operation-plans>

### Upcoming burns

Burns that will be conducted within the next ten days (weather conditions permitting) can be viewed at:  
<http://www.ffm.vic.gov.au/bushfire-fuel-and-risk-management/planned-burns>

You can also sign up to the Planned burning notification system (PBNS) to receive automated SMS and email notifications about planned burns on public land when they are close to being carried out.

# How to become involved in the Fire Operations Planning Process

DELWP welcomes comment on fire management all year round, on all parts of the planning process – both strategic and operational. Please be aware that due to the planning cycle your comments relating to fire operations may be included in next year's Fire Operations Plan.

Comments and suggestions about DELWP fire management planning can be sent to:

**Regional Manager, Regional Fuel Management Coordination**

PO Box 3100

Bendigo Delivery Centre, Victoria, 3554

**Planned Burning Email contact details:**

Comments may also be sent by email to: [loddonmallee.plannedburning@delwp.vic.gov.au](mailto:loddonmallee.plannedburning@delwp.vic.gov.au)

# Appendix (i): Schedules of Activities

## Mallee DISTRICT SCHEDULE

### SCHEDULE 1: PLANNED BURNS

The activities in this schedule are planned burns.

Please note that the planned burn year and season identified for each planned burn is indicative only and may be changed due to weather conditions and operational requirements.

**Abbreviations in Schedule1:** \*\* asterisk on burn name denotes a cross tenure burn; PV - Parks Victoria; COM - Committee of Management; DELWP- Department of Environment Land Water and Planning; PP – Private Property; FRB - Fuel Reduction Burn; ECO - ecological burn; FMZ – Fire Management Zone; APZ - Asset Protection Zone; BMZ – Bushfire Moderation Zone; LMZ - Landscape Management Zone; PBEZ – Planned Burn Exclusion Zone; NZ -Not Zoned.

### Planned Burns 2017/18

Local Government Area	Burn Number	Burn Name	General Location	Land Manager	Burn Season	Burn Type (FRB/ECO)	Land Management Objective	FMZ	Planned Burn Size (ha)	New Burn Yes/No
Hindmarsh	278	Big Desert - Netting Fence Fire Break	11KMS NE OF YANAC	DELWP	Spring	FRB	To provide bushfire protection outcomes by reducing overall fuel hazard and bushfire hazard in the landscape.	LMZ	243.73	N
Hindmarsh	WYP-3011	Big Desert - Pella Fire North	19KM W OF RAINBOW	DELWP	Autumn	ECO	To provide bushfire protection outcomes by reducing overall fuel hazard and bushfire hazard in the landscape.	LMZ	289.8	N
Hindmarsh	4MRAI0001	Rainbow Common*	1KM W OF RAINBOW	COM	Summer	FRB	To provide a high level of strategic protection to human life, property and highly valued assets within the Rainbow Township.	NZ	49.46	Y
Hindmarsh	377	Wyperfeld - Booligal West	25km NW OF RAINBOW	Parks Victoria	Autumn	FRB	To provide bushfire protection outcomes by reducing overall fuel hazard and bushfire hazard in the landscape.	LMZ	294.22	N
Hindmarsh	4MWYP0048	Wyperfeld - Chinamans North	40KM NW OF RAINBOW	Parks Victoria	Spring	FRB	To develop fuel reduced areas of sufficient width and continuity to reduce the speed and intensity of bushfires.	LMZ	732.29	N
Hindmarsh	WYP-3016	Wyperfeld - Underbool Track West	36KM S OF UNDERBOOL	Parks Victoria	Autumn	ECO	To provide bushfire protection outcomes by reducing overall fuel hazard and bushfire hazard in the landscape.	LMZ	587.26	N
Mildura	272	Patchewollock -	20KMS SE OF	DELWP	Spring	FRB	To develop fuel reduced areas of sufficient width	LMZ	291.56	N

		Ouyen Walpeup Road	WALPEUP				and continuity to reduce the speed and intensity of bushfires.			
Mildura	4MANN0005	Annuello - Benham Track	24KM SE OF HATTAH	Parks Victoria	Autumn	FRB	To provide bushfire protection outcomes by reducing overall fuel hazard and bushfire hazard in the landscape.	LMZ	636.83	N
Mildura	WYP-3004	Baring - East Boundary	6KM SW OF PATCHEWOLLOCK	DELWP	Autumn	FRB	To provide bushfire protection outcomes by reducing overall fuel hazard and bushfire hazard in the landscape.	LMZ	68.52	N
Mildura	WYP-3018	Big Desert - Fire Break Track	10KM S OF MURRAYVILLE	DELWP	Spring	FRB	To develop fuel reduced areas of sufficient width and continuity to reduce the speed and intensity of bushfires.	BMZ	396.83	N
Mildura	WYP-3019	Big Desert - North West Boundary	25KM SW OF MURRAYVILLE	DELWP	Spring	FRB	To develop fuel reduced areas of sufficient width and continuity to reduce the speed and intensity of bushfires.	BMZ	260.5	Y
Mildura	WYP-3017	Big Desert - Northern Boundary	15KM SE OF MURRAYVILLE	DELWP	Spring	FRB	To develop fuel reduced areas of sufficient width and continuity to reduce the speed and intensity of bushfires.	BMZ	663.35	N
Mildura	224-1	Big Desert - Wilderness Area	20KMS SSW OF MURRAYVILLE	Parks Victoria	Spring	FRB	To develop fuel reduced areas of sufficient width and continuity to reduce the speed and intensity of bushfires.	BMZ	1694.66	N
Mildura	390	Boinka - Underbool Tank South	31KMS NW OF UNDERBOOL	DELWP	Spring	FRB	To provide bushfire protection outcomes by reducing overall fuel hazard and bushfire hazard in the landscape.	NZ	500.86	N
Mildura	LM-MAL-HAT-0010	Hattah - Old Calder Highway South		Parks Victoria	Autumn	FRB	To provide bushfire protection outcomes by reducing overall fuel hazard and bushfire hazard in the landscape.	LMZ	70.42	N
Mildura	HAT-3006	Hattah - Zig Zag South	11KM SE OF HATTAH	Parks Victoria	Autumn	ECO	To develop a fuel reduced area to the north of the adjacent private properties.	LMZ	288.53	N
Mildura	396	Murray Sunset - Border Track	66KMS SW OF WERRIMULL	Parks Victoria	Spring	FRB	To provide bushfire protection outcomes by reducing overall fuel hazard and bushfire hazard in the landscape.	LMZ	192.15	N
Mildura	391	Murray Sunset - Cowra Wilderness	28KMS N OF WALPEUP	Parks Victoria	Autumn	FRB	To provide bushfire protection outcomes by reducing overall fuel hazard and bushfire hazard in the landscape.	LMZ	1175.8	N
Mildura	4MMSN0020	Murray Sunset - Last Hope Track	45KM NNW OF UNDERBOOL	Parks Victoria	Autumn	FRB	To provide bushfire protection outcomes by reducing overall fuel hazard and bushfire hazard in the landscape.	LMZ	495.95	N
Mildura	4MMSN0043	Murray Sunset - Last Hope Track South East	40KM NNW OF WALPEUP	Parks Victoria	Autumn	FRB	To develop fuel reduced areas of sufficient width and continuity to reduce the speed and intensity of bushfires.	LMZ	715.51	N
Mildura	4MMSN0018	Murray Sunset - Miners Track	22KM SSE OF MERINGUR	Parks Victoria	Autumn	FRB	To develop fuel reduced areas of sufficient width and continuity to reduce the speed and intensity	LMZ	465.72	N



		North					of bushfires.			
Mildura	4MMSN0019	Murray Sunset - Miners Track South	27KM SSE OF MERINGUR	Parks Victoria	Autumn	FRB	To provide bushfire protection outcomes by reducing overall fuel hazard and bushfire hazard in the landscape.	LMZ	186.32	N
Mildura	4MMSN0017	Murray Sunset - Morkalla South Road	29KM SW OF MERINGUR	Parks Victoria	Spring	FRB	To provide bushfire protection outcomes by reducing overall fuel hazard and bushfire hazard in the landscape.	LMZ	835.1	N
Mildura	4MMSN0015	Murray Sunset - North West Plains Track	43KM NW OF UNDERBOOL	Parks Victoria	Spring	FRB	To provide bushfire protection outcomes by reducing overall fuel hazard and bushfire hazard in the landscape.	LMZ	1403.88	N
Mildura	256	Murray Sunset - One Tree Plain Track	29KM WSW OF HATTAH	Parks Victoria	Autumn	FRB	To develop fuel reduced areas of sufficient width and continuity to reduce the speed and intensity of bushfires.	BMZ	337.32	N
Mildura	245	Murray Sunset - Pheenys Track East	38KM S OF WERRIMULL	Parks Victoria	Spring	FRB	To develop fuel reduced areas of sufficient width and continuity to reduce the speed and intensity of bushfires.	LMZ	588.02	N
Mildura	263	Murray Sunset - Southern Fire Break	17KMS N OF UNDERBOOL	Parks Victoria	Autumn	FRB	To develop fuel reduced areas of sufficient width and continuity to reduce the speed and intensity of bushfires.	BMZ	34.92	N
Mildura	255	Murray Sunset - Underbool Track	45km NW of UNDERBOOL	Parks Victoria	Autumn	FRB	To develop fuel reduced areas of sufficient width and continuity to reduce the speed and intensity of bushfires.	BMZ	369.56	N
Mildura	268	Murray Sunset - Walker Road	27KMS N OF WALPEUP	Parks Victoria	Autumn	FRB	To develop fuel reduced areas of sufficient width and continuity to reduce the speed and intensity of bushfires.	BMZ	126.1	N
Mildura	4MMSN0001	Murray Sunset - Wilderness Central	50KM NNE OF MURRAYVILLE	Parks Victoria	Autumn	FRB	To provide bushfire protection outcomes by reducing overall fuel hazard and bushfire hazard in the landscape.	LMZ	430.98	N
Mildura	4MMSN0016	Murray Sunset - Wilderness Pheenys Track	37KM S OF MERINGUR	Parks Victoria	Spring	FRB	To provide bushfire protection outcomes by reducing overall fuel hazard and bushfire hazard in the landscape.	LMZ	1427.07	N
Mildura	4MSUN0003	Sunnycliffs - Woolong Wetlands	3.5KM NE OF REDCLIFFS	Parks Victoria	Spring	FRB	To provide bushfire protection outcomes by reducing overall fuel hazard and bushfire hazard in the landscape.	LMZ	66.02	N
Mildura	WYP-3008	Wyperfeld - Nine Mile Square East	23KM SW OF PATCHEWOLLOCK	Parks Victoria	Autumn	ECO	To provide bushfire protection outcomes by reducing overall fuel hazard and bushfire hazard in the landscape.	LMZ	356.28	N
Mildura	259	Wyperfeld - Nine Mile Square West	33KM S OF UNDERBOOL	Parks Victoria	Spring	FRB	To develop fuel reduced areas of sufficient width and continuity to reduce the speed and intensity of bushfires.	BMZ	267.12	N
Swan Hill	LM-MAL-SWA-0002	Pental Island - Little Murray Weir	6KM N of Lake Boga	DELWP	Spring	FRB	To provide bushfire protection outcomes by reducing overall fuel hazard and bushfire hazard in the landscape.	LMZ	3.38	Y
West Wimmera	WYP-3009	Big Desert - Telopea West	30KM N OF YANAC	DELWP	Spring	ECO	To provide bushfire protection outcomes by reducing overall fuel hazard and bushfire hazard	LMZ	115.34	N

							in the landscape.			
Yarriambiack	379	Wyperfeld - Ginap Track North	17 KM SSW OF PATCHEWOLLOCK	Parks Victoria	Autumn	FRB	To provide bushfire protection outcomes by reducing overall fuel hazard and bushfire hazard in the landscape.	LMZ	302.11	N
Yarriambiack	258	Wyperfeld - North South Track	16KM SSW OF PATCHEWOLLOCK	Parks Victoria	Autumn	FRB	To develop fuel reduced areas of sufficient width and continuity to reduce the speed and intensity of bushfires.	LMZ	642.09	N
Yarriambiack	WYP-2002	Wyperfeld - Wirribibial Track*	15KM NW OF HOPETOUN	Parks Victoria & PP	Spring	FRB	To develop fuel reduced areas of sufficient width and continuity to reduce the speed and intensity of bushfires.	BMZ	227.52	N

## Planned Burns 2018/19

Local Government Area	Burn Number	Burn Name	General Location	Land Manager	Burn Season	Burn Type (FRB/ECO)	Land Management Objective	FMZ	Planned Burn Size (ha)	New Burn Yes/No
Hindmarsh	WYP-3030	Big Desert - Netting Fence North	33KM NW OF YANAC	DELWP	Autumn	ECO	To provide bushfire protection outcomes by reducing overall fuel hazard and bushfire hazard in the landscape.	LMZ	1878.72	Y
Hindmarsh	4MWYP0030	Wyperfeld - Booligal Boundary	20KM NW OF RAINBOW	Parks Victoria	Spring	FRB	To develop a fuel reduced area to the south of the adjacent crop/stubble.	BMZ	1026.97	N
Hindmarsh	WYP-3012	Wyperfeld - Booligal South Boundary	17KM W OF RAINBOW	DELWP	Autumn	ECO	To develop fuel reduced areas of sufficient width and continuity to reduce the speed and intensity of bushfires.	BMZ	857.64	N
Hindmarsh	LM-MAL-WYP-0024	Wyperfeld - Milmed Rock Track East	40KM NW of Rainbow	Parks Victoria	Unknown	FRB	To provide bushfire protection outcomes by reducing overall fuel hazard and bushfire hazard in the landscape.	LMZ	996.55	Y
Mildura	4MANN0004	Annuello - Eastern Boundary	16KM WSW OF ANNUELLO	Parks Victoria	Spring	FRB	To develop fuel reduced areas of sufficient width and continuity to reduce the speed and intensity of bushfires.	BMZ	361.47	N
Mildura	4MANN0001	Annuello - North West Boundary	18KM SE OF HATTAH	Parks Victoria	Spring	FRB	To develop fuel reduced areas of sufficient width and continuity to reduce the speed and intensity of bushfires.	BMZ	695.29	N
Mildura	4MANN0002	Annuello - South West Boundary	20KM NE OF OUYEN	Parks Victoria	Spring	FRB	To develop fuel reduced areas of sufficient width and continuity to reduce the speed and intensity of bushfires.	BMZ	579.08	N
Mildura	4MANN0003	Annuello - Southern Boundary	28KM ENE OF OUYEN	Parks Victoria	Spring	FRB	To develop fuel reduced areas of sufficient width and continuity to reduce the speed and intensity of bushfires.	BMZ	341.91	N
Mildura	4MWYP0033	Big Desert - Coburns Pines	18KM SW OF MURRAYVILLE	DELWP	Autumn	FRB	To develop a fuel reduced area to the west of the Coburns Pines visitation area.	LMZ	28.29	N
Mildura	4MWYP0039	Big Desert - Tutye South Boundary	10KM SOUTH OF TUTYE	DELWP	Spring	FRB	To develop a fuel reduced area to the south of the adjacent crop/stubble.	BMZ	359.39	N
Mildura	367	Hattah - Mournpall South	5KM NE of Hattah	Parks Victoria	Autumn	FRB	To provide bushfire protection outcomes by reducing overall fuel hazard and bushfire hazard in the landscape.	LMZ	126.03	N
Mildura	4MHAT0009	Hattah - Red Ocre Track	12KM N OF HATTAH	Parks Victoria	Autumn	FRB	To provide bushfire protection outcomes by reducing overall fuel hazard and bushfire hazard in the landscape.	BMZ	241.94	N
Mildura	4MMSN0038	Murray Sunset -	26KM NNE OF	Parks	Spring	FRB	To develop a fuel reduced area to the south of the	BMZ	1366.39	N

		Danyo Boundary	MURRAYVILLE	Victoria			adjacent private property.			
Mildura	4MMSN0029	Murray Sunset - Galah North Road	15KM SW OF HATTAH	Parks Victoria	Spring	FRB	To provide bushfire protection outcomes by reducing overall fuel hazard and bushfire hazard in the landscape.	BMZ	207.37	N
Mildura	4MMSN0027	Murray Sunset - Mengler Road West	24KM SW OF HATTAH	Parks Victoria	Spring	FRB	To develop fuel reduced areas of sufficient width and continuity to reduce the speed and intensity of bushfires.	BMZ	54.83	N
Mildura	4MMSN0024	Murray Sunset - Mt Crozier Track East	16KM NNW OF UNDERBOOL	Parks Victoria	Spring	FRB	To develop a fuel reduced area to the north of the adjacent crop/stubble.	BMZ	456.4	N
Mildura	4MMSN0025	Murray Sunset - One Tree Plain Track South	28KM SW OF HATTAH	Parks Victoria	Spring	FRB	To provide bushfire protection outcomes by reducing overall fuel hazard and bushfire hazard in the landscape.	BMZ	982.32	N
Mildura	MSN-3007	Murray Sunset - Pink Lakes East Boundary	12KM N OF UNDERBOOL	Parks Victoria	Spring	FRB	To develop fuel reduced areas of sufficient width and continuity to reduce the speed and intensity of bushfires.	LMZ	788.07	N
Mildura	4MMSN0021	Murray Sunset - Rocket Lake Track West	36KM SSE OF WERRIMULL	Parks Victoria	Spring	FRB	To develop fuel reduced areas of sufficient width and continuity to reduce the speed and intensity of bushfires.	LMZ	2853.3	N
Mildura	4MMSN0026	Murray Sunset - South Meridian Road	32KM SW OF HATTAH	Parks Victoria	Spring	FRB	To develop fuel reduced areas of sufficient width and continuity to reduce the speed and intensity of bushfires.	BMZ	162.95	N
Mildura	WYP-3014	Patchewollock - North Boundary	13KM SE OF WALPEUP	DELWP	Spring	ECO	To provide bushfire protection outcomes by reducing overall fuel hazard and bushfire hazard in the landscape.	LMZ	518.59	Y
Mildura	4MWAL0002	Walpeup - Township West	1KM W OF WALPEUP	Parks Victoria	Autumn	FRB	To develop a fuel reduced area to the west of the Walpeup township.	BMZ	8.66	N
Mildura	4MWYP0038	Wyperfeld - Linga South Boundary	12.6KM SOUTH OF UNDERBOOL	Parks Victoria	Spring	FRB	To develop a fuel reduced area to the south of the adjacent crop/stubble.	BMZ	187.92	Y
Mildura	4MWYP0041	Wyperfeld - Milmed Rock Track West	40KM SE OF MURRAYVILLE	Parks Victoria	Autumn	FRB	To provide bushfire protection outcomes by reducing overall fuel hazard and bushfire hazard in the landscape.	LMZ	544.76	N
Mildura	4MWYP0034	Wyperfeld - Twelve Mile Patch Soak	32KM SW OF UNDERBOOL	Parks Victoria	Autumn	FRB	To develop a fuel reduced area to the west of the Twelve Mile Patch Soak visitation area.	LMZ	41.62	N
Swan Hill	4MANN0006	Annuello - Northern Boundary	31KM ESE OF HATTAH	Parks Victoria	Spring	FRB	To develop fuel reduced areas of sufficient width and continuity to reduce the speed and intensity of bushfires.	LMZ	493.08	N
West Wimmera	WYP-3023	Big Desert - Telopea Central	27KM N OF YANAC	DELWP	Spring	ECO	To provide bushfire protection outcomes by reducing overall fuel hazard and bushfire hazard in the landscape.	LMZ	237.4	Y
Yarriambiack	WYP-3015	Wyperfeld - Cambacanya	21KM SW OF PATCHEWOLLOCK	Parks Victoria	Spring	ECO	To provide bushfire protection outcomes by reducing overall fuel hazard and bushfire hazard in	LMZ	372.38	Y



		Track West					the landscape.			
Yarriambiack	4MWYP0031	Wyperfeld - Dattuck Yellow Gums	18.5KM NNW OF HOPETOUN	Parks Victoria	Autumn	FRB	To develop a fuel reduced area to the west of the Yellow Gum EVC.	LMZ	47.4	N

## Planned Burns 2019/20

Local Government Area	Burn Number	Burn Name	General Location	Land Manager	Burn Season	Burn Type (FRB/ECO)	Land Management Objective	FMZ	Planned Burn Size (ha)	New Burn Yes/No
Hindmarsh	4MWYP0026	Big Desert - Broadies Track	20KM WSW OF RAINBOW	DELWP	Spring	FRB	To provide bushfire protection outcomes by reducing overall fuel hazard and bushfire hazard in the landscape.	BMZ	414.66	N
Hindmarsh	4MWYP0035	Big Desert - Netting Fence Central	38KM WSW OF RAINBOW	DELWP	Autumn	FRB	To build on protection works in the adjacent Asset Protection Zone.	BMZ	716.78	N
Hindmarsh	4MWYP0036	Big Desert - Telopea North	33KM NNW OF YANAC	DELWP	Autumn	FRB	To develop fuel reduced areas of sufficient width and continuity to reduce the speed and intensity of bushfires.	BMZ	116.34	N
Mildura	225	Big Desert - Majorlock Soak Track	15KM SW of Cowangie	Parks Victoria	Autumn	FRB	To develop fuel reduced areas of sufficient width and continuity to reduce the speed and intensity of bushfires.	BMZ	3285.34	N
Mildura	4MWYP0045	Big Desert - Nhill Murrayville Track South	42KM NNW OF YANAC	DELWP	Spring	FRB	To develop fuel reduced areas of sufficient width and continuity to reduce the speed and intensity of bushfires.	BMZ	2734.14	N
Mildura	270	Big Desert - Wilderness North	33KMS SW OF MURRAYVILLE	Parks Victoria	Spring	FRB	To develop fuel reduced areas of sufficient width and continuity to reduce the speed and intensity of bushfires.	BMZ	1316.51	N
Mildura	4MHAT0012	Hattah - Calder Highway East	9KM NNW OF HATTAH	Parks Victoria	Spring	FRB	To provide bushfire protection outcomes by reducing overall fuel hazard and bushfire hazard in the landscape.	LMZ	279.84	N
Mildura	HAT-3007	Hattah - Dumosa Track	17KM N OF HATTAH	Parks Victoria	Spring	ECO	To provide bushfire protection outcomes by reducing overall fuel hazard and bushfire hazard in the landscape.	LMZ	131.26	N
Mildura	4MMSN0003	Murray Sunset - Honeymoon Hut Track North	28KM NW OF UNDERBOOL	Parks Victoria	Spring	FRB	To provide bushfire protection outcomes by reducing overall fuel hazard and bushfire hazard in the landscape.	LMZ	819.65	N
Mildura	LM-MAL-MSN-0035	Murray Sunset - Mengler Road North East	18KM SW of Hattah	Parks Victoria	Unknown	FRB	To provide bushfire protection outcomes by reducing overall fuel hazard and bushfire hazard in the landscape.	LMZ	371.43	Y
Mildura	4MMSN0036	Murray Sunset - Mt Crozier Track	32KM NNW OF UNDERBOOL	Parks Victoria	Autumn	FRB	To provide bushfire protection outcomes by reducing overall fuel hazard and bushfire hazard in the landscape.	LMZ	505.85	N
Mildura	4MMSN0044	Murray Sunset - Mt Jess Corridor	20.5KM NNW OF UNDERBOOL	Parks Victoria	Autumn	FRB	To provide bushfire protection outcomes by reducing overall fuel hazard and bushfire hazard in the landscape.	BMZ	1085.12	N
Mildura	4MMSN0022	Murray Sunset -	38KM WNW OF	Parks	Spring	FRB	To provide bushfire protection outcomes by	LMZ	698.97	N

		Nowingi Line Track	HATTAH	Victoria			reducing overall fuel hazard and bushfire hazard in the landscape.			
Mildura	MSN-2002	Murray Sunset - South West Boundary	22KM N OF MURRAYVILLE	DELWP	Spring	FRB	To develop a fuel reduced area to the north of the adjacent private property.	BMZ	857.18	Y
Mildura	4MMSN0011	Murray Sunset - Sunset Track	36KM N OF MURRAYVILLE	Parks Victoria	Spring	FRB	To develop fuel reduced areas of sufficient width and continuity to reduce the speed and intensity of bushfires.	BMZ	2031.56	N
Mildura	4MMSN0049	Murray Sunset - Tutye North Boundary	21KM N OF TUTYE	Parks Victoria	Autumn	FRB	To develop a fuel reduced area to the north of the adjacent crop/stubble.	BMZ	289.96	N
Mildura	4MMSN0002	Murray Sunset - Underbool Track West	42KM NNW OF UNDERBOOL	Parks Victoria	Spring	FRB	To provide bushfire protection outcomes by reducing overall fuel hazard and bushfire hazard in the landscape.	LMZ	354.88	N
Mildura	4MMSN0042	Murray Sunset - Wilderness West	48KM N OF MURRAYVILLE	Parks Victoria	Autumn	FRB	To provide bushfire protection outcomes by reducing overall fuel hazard and bushfire hazard in the landscape.	LMZ	622.99	N
Mildura	4MMUR0001	Murrayville - Township North	2KM NW OF MURRAYVILLE	Parks Victoria	Autumn	FRB	To develop a fuel reduced area to the north west of the Murrayville township.	APZ	5.94	N
Mildura	4MWYP0012	Patchewollock - South Boundary	10KM NW OF PATCHEWOLLOCK	DELWP	Autumn	FRB	To provide bushfire protection outcomes by reducing overall fuel hazard and bushfire hazard in the landscape.	LMZ	447.58	N
Swan Hill	4MROB0001	Kooloonong - Menzies Boundary	13KM SW OF BOUNDARY BEND	Parks Victoria	Spring	FRB	To provide bushfire protection outcomes by reducing overall fuel hazard and bushfire hazard in the landscape.	LMZ	75.55	N
Swan Hill	4MROB0003	Wandown - North Boundary	18KM SW OF BOUNDARY BEND	Parks Victoria	Spring	FRB	To provide bushfire protection outcomes by reducing overall fuel hazard and bushfire hazard in the landscape.	LMZ	197.62	N
Swan Hill	4MROB0002	Wandown - South Boundary	15KM SW OF BOUNDARY BEND	Parks Victoria	Spring	FRB	To provide bushfire protection outcomes by reducing overall fuel hazard and bushfire hazard in the landscape.	LMZ	99.73	N
West Wimmera	4MWYP0036	Big Desert - Telopea North	33KM NNW OF YANAC	DELWP	Autumn	FRB	To develop fuel reduced areas of sufficient width and continuity to reduce the speed and intensity of bushfires.	BMZ	970.64	N
West Wimmera	4MWYP0046	Big Desert - Wilderness South	46KM NNW OF YANAC	Parks Victoria	Spring	FRB	To provide bushfire protection outcomes by reducing overall fuel hazard and bushfire hazard in the landscape.	LMZ	1015.44	N
Yarriambiack	4MWAT0001	Wathe - North Boundary	11KM S OF SPEED	Parks Victoria	Spring	FRB	To develop a fuel reduced area to the east of the adjacent private property.	LMZ	74.04	N
Yarriambiack	4MWAT0002	Wathe - West Boundary	16KM SSW OF SPEED	Parks Victoria	Spring	FRB	To develop a fuel reduced area to the south of the adjacent private property.	LMZ	128.68	N

## Murray Goldfields DISTRICT SCHEDULE

### SCHEDULE 1: PLANNED BURNS

The activities in this schedule are planned burns.

Please note that the planned burn year and season identified for each planned burn is indicative only and may be changed due to weather conditions and operational requirements.

**Abbreviations in Schedule1:** "\*" asterisk on burn name denotes a cross tenure burn; PV - Parks Victoria; COM - Committee of Management; DELWP- Department of Environment Land Water and Planning; PP – Private Property; FRB - Fuel Reduction Burn; ECO - ecological burn; FMZ – Fire Management Zone; APZ - Asset Protection Zone; BMZ – Bushfire Moderation Zone; LMZ - Landscape Management Zone; PBEZ – Planned Burn Exclusion Zone; NZ -Not Zoned.

### Planned Burns 2017/18

Local Government Area	Burn Number	Burn Name	General Location	Land Manager	Burn Season	Burn Type (FRB/ECO)	Land Management Objective	FMZ	Planned Burn Size (ha)	New Burn Yes/No
Campaspe	MGFRSH013	Rushworth - Mcdonald St	500M NORTH OF RUSHWORTH TOWNSHIP	DELWP	Spring	FRB	To provide the highest level of localised protection to human life, property and community assets identified as highly valued including Rushworth.	APZ	25.26	N
Campaspe	MGFRSH010	Rushworth - Muhlans St	1KM NE OF RUSHWORTH TOWNSHIP	DELWP	Spring	FRB	To provide the highest level of localised protection to human life, property and community assets identified as highly valued including Rushworth.	APZ	38.68	N
Central Goldfields	LM-MGF-MRY-0021	Bung Bong - Lmb Bung Bong Lillicur Sf	5km W of TALBOT	DELWP	Autumn	FRB	To modify the vegetation abundance across the planned area to assist the promotion of Ironbark/Box.	LMZ	4524.81	Y
Central Goldfields	MGFMRY001	DDW Maryborough - Black Jacks Tk	4KM NORTH OF MARYBOROUGH	DELWP	Spring	FRB	To develop fuel reduced areas of sufficient width and continuity to reduce the speed and intensity of bushfires.	BMZ	178.66	N
Central Goldfields	LM-MGF-DDW-004	Maryborough - Djunduk Wi- M60 Track	5.5km N of Maryborough	DELWP	Spring	FRB	To modify the vegetation structure across the planned area to assist the promotion of grassey and herby understory.	LMZ	26.11	N
Central Goldfields	LM-MGF-MRY-0016	Mount Hooghly - Mccafferty Tk	4.6km SE of Dunolly	DELWP	Autumn	FRB	To develop fuel reduced areas of sufficient width and continuity to reduce the speed and intensity of bushfires.	BMZ	118.12	Y
Gannawarra	LM-MGF-COH-0005	Cohuna - Barapa Iron Punt Tk	8.5km NW of Cohuna	Parks Victoria	Autumn	FRB	To modify the vegetation abundance across the planned area to assist the control of Riverine Woodland/Forest.	NZ	1.26	Y

Gannawarra	MGFCOH018	Cohuna - Rifle Butts Tk	4.7km North of Cohuna	DELWP	Spring	FRB	To develop fuel reduced areas of sufficient width and continuity to reduce the speed and intensity of bushfires.	BMZ	15.37	N
Greater Bendigo	MGFBGO017	East Bendigo - Rifle Range	5KM EAST OF BENDIGO	Parks Victoria	Autumn	FRB	To develop fuel reduced areas of sufficient width and continuity to reduce the speed and intensity of bushfires.	BMZ	290.94	N
Greater Bendigo	LM-MGF-HTH-0008	Heathcote - Carboon Ln	1.7km SW of Heathcote	DELWP	Spring	FRB	To provide the highest level of localised protection to human life, property and community assets identified as highly valued including Heathcote.	APZ	18.99	N
Greater Bendigo	MGFHTH008	Heathcote - Dargile Tk	6KM NNE OF HEATHCOTE	Parks Victoria	Spring	FRB	To develop fuel reduced areas of sufficient width and continuity to reduce the speed and intensity of bushfires.	BMZ	541.94	N
Greater Bendigo	LM-MGF-BGO-0029	Kimbolton - Airport Track	2.7km NE of Kimbolton	DELWP	Autumn	FRB	To develop fuel reduced areas of sufficient width and continuity to reduce the speed and intensity of bushfires.	BMZ	165.92	N
Greater Bendigo	MGFBGO016	Maiden Gully - Byron Road	9.5KM WEST OF BENDIGO	Parks Victoria	Spring	FRB	To develop fuel reduced areas of sufficient width and continuity to reduce the speed and intensity of bushfires.	BMZ	191.01	N
Greater Bendigo	MGFBGO070	Maiden Gully - Hermitage Rd*	2.5km NW OF MAIDEN GULLY	DELWP & PP	Spring	FRB	To develop fuel reduced areas of sufficient width and continuity to reduce the speed and intensity of bushfires.	BMZ	83.4	N
Greater Bendigo	LM-MGF-DDW-003	Whipstick - Djandak Wi-Nerring- Brights Lane	6km NW of Huntly	Parks Victoria	Spring	FRB	To modify the vegetation structure across the planned area to assist the promotion of grassy and herby understory species.	BMZ	20	N
Greater Bendigo	MGFBGO006	White Hills - Bobs St	3KM NE OF BENDIGO	Parks Victoria	Spring	FRB	To provide the highest level of localised protection to human life, property and community assets identified as highly valued including East Bendigo.	APZ	45.25	N
Hepburn	LM-MGF-CAS-0022	Denver - Boundary Creek Tk	6.5km NE of Glenlyon	DELWP	Autumn	FRB	To provide the highest level of localised protection to human life, property and community assets identified as highly valued including Denver.	APZ	79.94	Y
Loddon	LM-MGF-DDW-005	Boort - Djandak Wi - Little Lake Boort*	1.1km S of Boort	COM Other	Spring	FRB	To modify the vegetation structure across the planned area to assist the control of weeds and biomass to promote native herbs and grasses.	NZ	5.99	Y
Loddon	MGFING060	DDW Ngarri - Mt Egbert	8km ESE of Whychitella	Parks Victoria	Spring	ECO	Cultural burning wording to follow	LMZ	134.96	N
Loddon	MGFMRY040	Dunolly - Noose Tk	5.5km NNE of Dunolly	DELWP	Winter	FRB	To develop fuel reduced areas of sufficient width and continuity to reduce the speed and intensity of bushfires.	BMZ	207.05	N
Loddon	MGFING058	Inglewood - Potter	Inglewood	DELWP & PP	Spring	FRB	To build on protection works in adjacent	BMZ	160.9	N

		Hill*	Township				Asset Protection Zone.			
Loddon	MGFING034	Tarnagulla - Crystal Hill Rd	TARNAGULLA TOWNSHIP	Parks Victoria	Spring	FRB	To develop fuel reduced areas of sufficient width and continuity to reduce the speed and intensity of bushfires.	BMZ	14.31	N
Loddon	MGFING032	Wedderburn - White Rock Rd	1.2KM WEST OF WEDDERBURN	Parks Victoria	Spring	FRB	To develop fuel reduced areas of sufficient width and continuity to reduce the speed and intensity of bushfires.	BMZ	250.57	N
Mount Alexander	LM-MGF-CAS-0002	Barkers Creek - Fire Investigation Escape Tk	3km N of Castlemaine	DELWP	Spring	FRB	To provide the highest level of localised protection to human life, property and community assets identified as highly valued including Castlemaine residents while achieving training outcomes for fire investigation.	APZ	24.2	Y
Mount Alexander	MGFCAS003	Castlemaine - Kalimna Park	500M EAST OF CASTLEMAINE	Parks Victoria	Autumn	FRB	To develop fuel reduced areas of sufficient width and continuity to reduce the speed and intensity of bushfires.	BMZ	173.61	N
Mount Alexander	MGFCAS060	Harcourt - Mt Alexander	4km East of Harcourt	Parks Victoria	Autumn	FRB	To develop a fuel reduced area to the West of the Telecommunications Infrastructure.	APZ	5.3	N
Mount Alexander	MGFCAS048	Maldon - Maldon Rd Complex	1km SE OF MALDON	Parks Victoria	Spring	FRB	To provide the highest level of localised protection to human life, property and community assets identified as highly valued including East Bendigo.	APZ	17.94	N
Mount Alexander	MGFCAS039	National Fire Investigation Training - Castlemaine	2.5KM NW OF CASTLEMAINE	DELWP	Spring	FRB	Small plots within a two (2) hectare burn site to be burnt. This is within a large area that is previously burnt and had unburnt plots left in the middle.	BMZ	10.31	N
Mount Alexander	MGFCAS036	National Fire Investigation Training - Glenluce	12.5KM SSE OF CASTLEMAINE	Parks Victoria	Spring	FRB	Small plots within a five (5) hectare burn site to be burnt. This is within a large area that is previously burnt and had unburnt plots left in the middle.	LMZ	13.54	N
Mount Alexander	MGFCAS056	Newstead - Woods Rd	NEWSTEAD	DELWP	Spring	FRB	To provide the highest level of localised protection to human life, property and community assets identified as highly valued including East Bendigo.	APZ	9.99	N
Mount Alexander	MGFCAS066	Taradale - Cypress Dr	2km NW of Taradale	Parks Victoria	Autumn	FRB	To develop a fuel reduced area to the NW of the Taradale Locality.	BMZ	95.87	N
Mount Alexander	LM-MGF-CAS-0020	Taradale - Plantation Track	2.8km E of Taradale	Parks Victoria	Autumn	FRB	To provide bushfire protection outcomes by reducing overall fuel hazard and bushfire hazard in the landscape.	LMZ	44.22	N
Northern Grampians	STA0042	Redbank - Mt Separation	5km NW Redbank	Parks Victoria	Autumn	FRB	To develop fuel reduced areas of sufficient width and continuity to reduce the speed and intensity of bushfires.	BMZ	580.65	N
Northern Grampians	MGFSTA021	St Arnaud - Sebastopol Hill	2.5km NNW of St Arnaud	Parks Victoria	Spring	FRB	To provide an irregular mosaic of areas of fuel reduction which will complement works	BMZ	66.35	N



							in adjacent fire management zones and can assist in ecological resilience and forest regeneration.			
Northern Grampians	MGFSTA019	St Arnaud - Upper Daily Rd	1km NE of St Arnaud	DELWP	Spring	FRB	To develop fuel reduced areas of sufficient width and continuity to reduce the speed and intensity of bushfires.	BMZ	9.69	N
Pyrenees	LM-MGF-AVO-0013	Landsborough - Mashado Trk	7.2km SE of Landsborough	Parks Victoria	Unknown	FRB	To provide bushfire protection outcomes by reducing overall fuel hazard and bushfire hazard in the landscape.	LMZ	1528.05	N
Pyrenees	MGFAVO025	Redbank - Dead Mans Tk	3.9km West of Redbank	Parks Victoria	Autumn	FRB	To develop fuel reduced areas of sufficient width and continuity to reduce the speed and intensity of bushfires.	BMZ	253.64	N

## Planned Burns 2018/19

Local Government Area	Burn Number	Burn Name	General Location	Land Manager	Burn Season	Burn Type (FRB/ECO)	Land Management Objective	FMZ	Planned Burn Size (ha)	New Burn Yes/No
Campaspe	LM-MGF-RSH-0007	Rushworth - Jones Road	1km S of Rushworth	DELWP	Unknown	FRB	To develop fuel reduced areas of sufficient width and continuity to reduce the speed and intensity of bushfires.	BMZ	97.77	Y
Campaspe	LM-MGF-RSH-0004	Whroo - Murchison Whroo Rd	2.5km E of Whroo	DELWP	Unknown	FRB	To develop fuel reduced areas of sufficient width and continuity to reduce the speed and intensity of bushfires.	BMZ	178.94	Y
Central Goldfields	LM-MGF-MRY-0020	Bealiba - Lmb Bealiba Barp Sf	6km NE of Bealiba	DELWP	Unknown	FRB	To modify the vegetation abundance across the planned area to assist the promotion of Ironbark/Box.	LMZ	4847.37	Y
Central Goldfields	LM-MGF-MRY-0013	Caralulup - Quarry Tk	4km SW of Talbot	Parks Victoria	Unknown	FRB	To develop fuel reduced areas of sufficient width and continuity to reduce the speed and intensity of bushfires.	BMZ	116.54	Y
Central Goldfields	MGFMRY051	Maryborough - Derby Rd	2.5km SSW of Maryborough	Parks Victoria	Spring	FRB	To provide the highest level of localised protection to human life, property and community assets identified as highly valued including Maryborough.	APZ	23.35	N
Central Goldfields	MGFMRY046	Maryborough - Station Lane	9.7km WSW of Maryborough	DELWP	Spring	FRB	To develop fuel reduced areas of sufficient width and continuity to reduce the speed and intensity of bushfires.	BMZ	163.78	N
Central Goldfields	MGFMRY044	Maryborough - White Horse Tk	4.5km SE of Maryborough	DELWP	Spring	FRB	To develop fuel reduced areas of sufficient width and continuity to reduce the speed and intensity of bushfires.	LMZ	251.64	N
Central Goldfields	MGFMRY047	Talbot - Moschetti Tk	5km W of Talbot	Parks Victoria	Spring	FRB	To develop fuel reduced areas of sufficient width and continuity to reduce the speed and intensity of bushfires.	BMZ	100.99	N
Greater Bendigo	MGFBGO101	Big Hill - Channel Tk	3.2km SSE of Kangaroo Flat	Parks Victoria	Spring	FRB	To develop fuel reduced areas of sufficient width and continuity to reduce the speed and intensity of bushfires.	BMZ	24.13	N
Greater Bendigo	MGFBGO098	Big Hill - Tower	2.6km SSE of Big Hill	Parks Victoria	Spring	FRB	To provide the highest level of localised protection to human life, property and community assets identified as highly valued including the telecommunications towers.	PBEZ	0.88	N
Greater Bendigo	LM-MGF-HTH-0006	Costerfield - Hall Tk	5.2km NE of Costerfield	Parks Victoria	Unknown	FRB	To develop fuel reduced areas of sufficient width and continuity to reduce the speed and intensity of bushfires.	BMZ	372.41	Y
Greater Bendigo	MGFBGO074	Eaglehawk - Lightning Hill	1.5km NORTH OF EAGLEHAWK	Parks Victoria	Spring	FRB	To provide the highest level of localised protection to human life, property and community assets identified as highly valued including Eaglehawk.	APZ	167.8	N

Greater Bendigo	MGFHTH004	Heathcote - Mcivor Range	1KM ENE OF HEATHCOTE	Parks Victoria	Spring	FRB	To develop fuel reduced areas of sufficient width and continuity to reduce the speed and intensity of bushfires.	BMZ	141.57	N
Greater Bendigo	MGFBGO049	Huntly - Viola Rd	1.2KM NE of Huntly	DELWP	Spring	FRB	To provide a high level of strategic protection to human life, property and highly valued assets.	APZ	2.49	N
Greater Bendigo	LM-MGF-BGO-0022	Huntly North - Millwood Rd	11.2km N of Huntly	Parks Victoria	Unknown	FRB	To develop fuel reduced areas of sufficient width and continuity to reduce the speed and intensity of bushfires.	BMZ	157.96	Y
Greater Bendigo	LM-MGF-BGO-0017	Kamarooka - Hartlands Road	9.3km E of Raywood	Parks Victoria	Unknown	FRB	To provide bushfire protection outcomes by reducing overall fuel hazard and bushfire hazard in the landscape.	LMZ	112.6	N
Greater Bendigo	LM-MGF-BGO-0030	Kangaroo Flat - Tipperary Ln	1.4km SE of Kangaroo Flat	Parks Victoria	Unknown	FRB	To develop fuel reduced areas of sufficient width and continuity to reduce the speed and intensity of bushfires.	BMZ	32.2	Y
Greater Bendigo	LM-MGF-BGO-0020	Lockwood - Tarr Road	6.5km SW of Bendigo	Parks Victoria	Unknown	FRB	To build on protection works in the adjacent Asset Protection Zone.	BMZ	217.87	Y
Greater Bendigo	LM-MGF-BGO-0031	Sedgwick - Kerrs Road	1.4km NE of Sedgwick	Parks Victoria	Unknown	FRB	To develop fuel reduced areas of sufficient width and continuity to reduce the speed and intensity of bushfires.	BMZ	169.08	Y
Hepburn	LM-MGF-CAS-0021	Denver - Ridge Rd	5.5km NE of Glenlyon	DELWP	Unknown	FRB	To develop fuel reduced areas of sufficient width and continuity to reduce the speed and intensity of bushfires.	BMZ	286.08	Y
Loddon	MGFING059	Inglewood - Reservoir	2km North of Inglewood	DELWP	Spring	FRB	To develop a fuel reduced area to the North of the Inglewood township.	BMZ	30.83	N
Loddon	MGFMRY036	Laanecoorie - Laane Tk	3km NW of Laanecoorie	DELWP	Spring	FRB	To develop fuel reduced areas of sufficient width and continuity to reduce the speed and intensity of bushfires.	BMZ	233.61	N
Macedon Ranges	LM-MGF-MAC-0003	Macedon - Bawden Rd	2km W of Mount Macedon	Parks Victoria	Unknown	FRB	To build on protection works in the adjacent Asset Protection Zone.	BMZ	162.73	N
Macedon Ranges	LM-MGF-MAC-0010	Macedon - Campey Rd	2km SW of Macedon	Parks Victoria	Unknown	FRB	To provide the highest level of localised protection to human life, property and community assets identified as highly valued including Macedon.	APZ	66.9	N
Macedon Ranges	LM-MGF-MAC-0002	Macedon - Turner Av	4.5km SE of Woodend	Parks Victoria	Unknown	FRB	To develop a fuel reduced area to the South of Braemar College.	BMZ	61.31	N
Mount Alexander	MGFCAS021	Chewton- Adelaide St	500M SSW OF CHEWTON	Parks Victoria	Winter	FRB	To provide the highest level of localised protection to human life, property and community assets identified as highly valued including Chewton Township.	APZ	14.62	N
Mount Alexander	LM-MGF-CAS-0018	Gower - Smiths Reef Tk	3.2km SE of Maldon	Parks Victoria	Unknown	FRB	To develop fuel reduced areas of sufficient width and continuity to reduce the speed and intensity of bushfires.	BMZ	25.66	Y
Mount Alexander	MGFCAS061	Walmer - Reillys Tk	3.6km North of Castlemaine	DELWP	Spring	FRB	To provide the highest level of localised protection to human life, property and community assets identified as highly valued including Castlemaine.	APZ	55.34	N
Northern	MGFSTA029	Dalyenong -	12km West of Bealiba	Parks	Autumn	ECO	To modify the vegetation structure across the	LMZ	273.07	N

Grampians		Emu Rd		Victoria			planned area to assist the promotion of Heathy Woodland.			
Northern Grampians	LM-MGF-STA-0007	Stuart Mill - Reserve Road	0.4km NE of Stuart Mill	Parks Victoria	Unknown	FRB	To provide the highest level of localised protection to human life, property and community assets identified as highly valued including private property east of Stuart Mill.	APZ	17.2	Y
Pyrenees	MGFAVO021	Avoca - Cross Track	15KM WEST OF AVOCA	DELWP	Autumn	FRB	To develop fuel reduced areas of sufficient width and continuity to reduce the speed and intensity of bushfires.	BMZ	250.39	N
Pyrenees	LM-MGF-AVO-0010	Percydale - Fiddlers Tk	8.5km NW of Avoca	Parks Victoria	Unknown	FRB	To develop fuel reduced areas of sufficient width and continuity to reduce the speed and intensity of bushfires.	BMZ	265.09	Y
Pyrenees	MGFAVO014	Redbank - Long Gully Tk	1.5KM SW OF REDBANK	Parks Victoria	Spring	FRB	To develop fuel reduced areas of sufficient width and continuity to reduce the speed and intensity of bushfires.	BMZ	402.82	N

## Planned Burns 2019/20

Local Government Area	Burn Number	Burn Name	General Location	Land Manager	Burn Season	Burn Type (FRB/ECO)	Land Management Objective	FMZ	Planned Burn Size (ha)	New Burn Yes/No
Central Goldfields	LM-MGF-MRY-0018	Amherst - Four Cat Tk	3.4km N of Talbot	DELWP	Unknown	FRB	To develop fuel reduced areas of sufficient width and continuity to reduce the speed and intensity of bushfires.	BMZ	197.82	Y
Central Goldfields	LM-MGF-MRY-0019	Maryborough - Pigeon Gully Tk	3.5km NE of Maryborough	DELWP	Unknown	FRB	To develop fuel reduced areas of sufficient width and continuity to reduce the speed and intensity of bushfires.	BMZ	47.97	N
Central Goldfields	MGFMRY028	Maryborough - Prices Rd	3KM NE OF MARYBOROUGH TOWNSHIP	DELWP	Spring	FRB	To develop fuel reduced areas of sufficient width and continuity to reduce the speed and intensity of bushfires.	BMZ	52.64	N
Central Goldfields	LM-MGF-MRY-0013	Maryborough - Reserve Tk	4km SW of Talbot	Parks Victoria	Unknown	FRB	To provide the highest level of localised protection to human life, property and community assets identified as highly valued including Maryborough.	BMZ	79.37	Y
Central Goldfields	MGFMRY026	Maryborough - Telegraph Tk	1.5KM ENE OF MARYBOROUGH TOWNSHIP	DELWP	Spring	FRB	To provide the highest level of localised protection to human life, property and community assets identified as highly valued including Maryborough.	APZ	143.51	N
Central Goldfields	LM-MGF-MRY-0015	Moliagul - Monument Road	1km W of Moliagul	Parks Victoria	Unknown	FRB	To provide bushfire protection outcomes by reducing overall fuel hazard and bushfire hazard in the landscape.	LMZ	64.48	N
Central Goldfields	LM-MGF-MRY-0017	Mount Hooghly - White Tk	3km SW of Dunolly	DELWP	Unknown	FRB	To develop fuel reduced areas of sufficient width and continuity to reduce the speed and intensity of bushfires.	BMZ	160.61	Y
Greater Bendigo	LM-MGF-HTH-0007	Heathcote - Forest Drive	2.3km SE of Heathcote	Parks Victoria	Unknown	FRB	To provide the highest level of localised protection to human life, property and community assets identified as highly valued including Heathcote.	APZ	156.21	N
Greater Bendigo	LM-MGF-HTH-0010	Heathcote - Hedleys Dam Tk	3.5km S of Heathcote	Parks Victoria	Unknown	FRB	To develop fuel reduced areas of sufficient width and continuity to reduce the speed and intensity of bushfires.	BMZ	91.25	Y
Greater Bendigo	LM-MGF-BGO-0027	Kimbolton - Tracey Tk	1km E of Kimbolton	DELWP	Unknown	FRB	To build on protection works in the adjacent Asset Protection Zone.	BMZ	200.96	N
Greater Bendigo	MGFBGO030	Maiden Gully - Edwards Rd*	5.5KM WEST OF BENDIGO	Parks Victoria & PP	Spring	FRB	To provide the highest level of localised protection to human life, property and community assets identified as highly valued including East Bendigo.	APZ	126.5	N
Greater Bendigo	MGFBGO024	Strathdale - Wildflower Dr	5KM SE OF BENDIGO	Parks Victoria	Spring	FRB	To provide the highest level of localised protection to human life, property and community assets identified as highly valued including Strathdale.	APZ	306.43	N
Greater Bendigo	LM-MGF-BGO-0025	Wellsford - Tresize Track	3.5km N of Junortoun	Parks Victoria	Unknown	FRB	To develop fuel reduced areas of sufficient width and continuity to reduce the speed and intensity of	BMZ	168.58	Y

							bushfires.			
Greater Bendigo	LM-MGF-BGO-0024	Whipstick - Whipstick Rd	3.5km N of Eaglehawk	Parks Victoria	Unknown	FRB	To develop fuel reduced areas of sufficient width and continuity to reduce the speed and intensity of bushfires.	BMZ	135.32	Y
Loddon	MGFING056	Inglewood - Rheola Rd	5km SW of Inglewood	Parks Victoria	Autumn	FRB	To provide bushfire protection outcomes by reducing overall fuel hazard and bushfire hazard in the landscape.	BMZ	447.79	N
Loddon	LM-MGF-ING-0012	Kingower - Mackenzies Gully Rd	1km SW of Kingower	DELWP	Unknown	FRB	To provide the highest level of localised protection to human life, property and community assets identified as highly valued including Kingower.	APZ	41.98	Y
Loddon	MGFING055	Wedderburn - Holts Lane	3km SSW of Wedderburn	Parks Victoria	Spring	FRB	To provide bushfire protection outcomes by reducing overall fuel hazard and bushfire hazard in the landscape.	BMZ	201.73	N
Loddon	MGFING039	Wedderburn - Permona Lane	2.5km SW OF WEDDERBURN	DELWP	Spring	FRB	To develop fuel reduced areas of sufficient width and continuity to reduce the speed and intensity of bushfires.	BMZ	279.92	N
Macedon Ranges	LM-MGF-MAC-0007	Benloch - Feeneys Ln	10.2km NW of Lancefield	Parks Victoria	Unknown	FRB	To provide bushfire protection outcomes by reducing overall fuel hazard and bushfire hazard in the landscape.	NZ	19.36	N
Macedon Ranges	LM-MGF-MAC-0005	Cobaw - Alcorns Tk	14km E of Kyneton	DELWP	Unknown	FRB	To develop fuel reduced areas of sufficient width and continuity to reduce the speed and intensity of bushfires.	BMZ	20.52	Y
Macedon Ranges	LM-MGF-MAC-0006	Macedon - Waterworks Rd	4.3km E of Woodend	Parks Victoria	Unknown	FRB	To provide the highest level of localised protection to human life, property and community assets identified as highly valued including Braemar College.	APZ	30.27	N
Mount Alexander	MGFCAS043	Castlemaine - Colles Rd	3KM NORTH EAST OF CASTLEMAINE	Parks Victoria	Winter	FRB	To provide the highest level of localised protection to human life, property and community assets identified as highly valued including Castlemaine.	APZ	31.09	N
Mount Alexander	LM-MGF-CAS-0015	Gower - Clarrys Tk	5km SE of Maldon	Parks Victoria	Unknown	FRB	To develop fuel reduced areas of sufficient width and continuity to reduce the speed and intensity of bushfires.	BMZ	38.84	Y
Mount Alexander	LM-MGF-CAS-0019	Newstead - Bruces Tk	1.6km N of Newstead	DELWP	Unknown	FRB	To develop fuel reduced areas of sufficient width and continuity to reduce the speed and intensity of bushfires.	BMZ	79.75	Y
Northern Grampians	LM-MGF-STA-0008	St Arnaud - Wattle Street	0.9km W of St Arnaud	Parks Victoria	Unknown	FRB	To provide the highest level of localised protection to human life, property and community assets identified as highly valued including St Arnaud.	APZ	13.25	Y
Pyrenees	LM-MGF-AVO-0011	Glenpatrick - Gollop Tk	10.1km W of Avoca	DELWP	Unknown	FRB	To develop fuel reduced areas of sufficient width and continuity to reduce the speed and intensity of bushfires.	BMZ	729.46	Y
Pyrenees	MGFAVO024	Landsborough – Barkly Tk	9.2km ESE of Landsborough	Parks Victoria	Spring	FRB	To develop fuel reduced areas of sufficient width and continuity to reduce the speed and intensity of bushfires.	BMZ	504.88	N
Pyrenees	MGFSTA004	Redbank - Diggers Tk	3.5KM WNW OF REDBANK	Parks Victoria	Autumn	FRB	To develop fuel reduced areas of sufficient width and continuity to reduce the speed and intensity of	BMZ	769.97	Y



							bushfires.			
Pyrenees	LM-MGF-AVO-0009	Redbank - Richmond Tk	2.5km SE of Redbank	Parks Victoria	Unknown	FRB	To develop fuel reduced areas of sufficient width and continuity to reduce the speed and intensity of bushfires.	BMZ	358.11	Y
Strathbogie	LM-MGF-HTH-0009	Redcastle - Paveys Rd	8.4km NE of Costerfield	DELWP	Unknown	FRB	To develop fuel reduced areas of sufficient width and continuity to reduce the speed and intensity of bushfires.	LMZ	99.61	Y
Pyrenees	LM-MGF-AVO-0014	Warrenmang - Lmb Pyrenees Jackson Track	12km W of Avoca	DELWP	Unknown	FRB	To modify the vegetation abundance across the planned area to assist the promotion of Grassy/Heathy Dry Forest, Foothills Forest.	LMZ	1238.23	Y

## SCHEDULE 2: NON-BURN FUEL TREATMENTS 2017/18

The table below contains a summary of proposed non-burn fuel treatments over the following year. Some of these fuel treatments are annual, with others prioritised based on the seasonal conditions and which planned burns are scheduled. Accompanying maps provide detail on where these fuel treatment activities are located. Note that the maps show approximate areas only and the actual treatment area will be dependent on the condition of the fuels at the time of assessment. Please contact your local DELWP or Parks Victoria office if further detail is required.

<b>Works by Land Manager</b>	<b>Parks Victoria (ha)</b>	<b>DELWP (ha)</b>	<b>Other (ha)</b>
Hectares Planned	2667	987	106

### SCHEDULE 3: NEW STRATEGIC FUELBREAKS 2017/18

DELWP and Parks Victoria work together to establish and maintain a network of strategic fuelbreaks to expand the protection of communities, forests and parks from the risk of bushfire. A strategic fuelbreak is a strip of land where vegetation has been modified to reduce the amount of fuel available to burn during a bushfire. Strategic fuelbreaks are an important tool for fire management on public land. They provide a fuel-reduced area from which to conduct back burning ahead of an approaching bushfire or to assist in the implementation of a planned burn.

Machinery is used to clear vegetation generally within a 15-20-metre-wide strip. In some instances, this width could be up to 40m. Existing roads and tracks are considered part of the clearing. Where possible, overstorey trees are retained to provide shading and connection between the trees for wildlife and landscape values. The locations of strategic fuelbreaks are included for information only. These activities are approved via other DELWP and Parks Victoria processes. CFA strategic fuel breaks are included in Municipal Fire Management Plans.

Strategic fuel break maintenance is an annual program and included in Schedule 2 above.

Road or Location Name	Locality	Operation Type	Distance (km)

# Glossary

This glossary provides information on terms contained within the body of this document and the schedules.

**Burn Type** – indicates the primary purpose of the burn including fuel reduction burn (FRB), ecological burn (ECO).

**Burn Number and Name**– the unique identifier for each burn or planned fuel management activity.

**Cross-tenure burn** – burns that cover both public and private land

**Fire Management Zone (FMZ)** – an area of land in which fire is managed for specific asset, fuel and ecological objectives. Values included in this column can be APZ - Asset Protection Zone; BMZ – Bushfire Moderation Zone; LMZ - Landscape Management Zone, PBEZ – Planned Burn Exclusion Zone; or, NZ -Not Zoned.

**Forest Fire Management Victoria (FFMVic)** - consists of specialist staff from DELWP, Parks Victoria, Melbourne Water and Vic Forests.

**Indicative Burn Season** – indicates the preferred season in which the burn will be completed. Actual delivery may be any time of the year.

**Land Manager** – the organisation responsible for day-to-day management of the works site – DELWP (Department of Environment Land Water and Planning); PV (Parks Victoria).

**Land Management Objective** - identifies the desired land management outcome(s) of the burn.

**Local Government Area (LGA)** – the municipality in which the majority of the fuel management activity is located.

**Location** – a direction and distance of the planned burn from the nearest major township/locality.

**Planned Burns** - Planned burning is one of DELWP's most important fire prevention activities. It involves the controlled application of fire during periods of lower fire risk, to achieve one of three main purposes: fuel reduction, ecological management and forest regeneration.

It is important to understand that planned burning operations, particularly fuel reduction burns, do not stop or eliminate the risk of bushfires. However, Victorian research, and similar information from other parts of Australia and overseas, clearly shows that firefighters have a much better chance of managing bushfires in areas where fuel reduction burns have been carried out.

Approved burns in this year's Plan will require a range of preparation works to make the planned area ready to ignite when the weather and other conditions are right. Preparation works may include, brushing up or grading of existing boundaries and internal tracks, management of hazardous trees, the construction and preparation of boundary and control lines with machinery and pest plant controls. The preparation works will have on-site inspections which will assess the surrounding assets and planned burn objectives.

**Planned Burn Size** – the maximum area of the fuel management activity measured in hectares (ha), including areas specifically excluded from disturbance.

**Strategic Fuelbreak:** A strategic fuelbreak is a strip of land where vegetation has been modified to reduce the amount of fuel available to burn during a bushfire.

**New Burn**– 'YES' = New burn did not appear on last year's FOP. 'NO' = Not a new burn. Burn was approved in the previous (2016/17- 2018/19) Fire Operations Plan but has not been carried out, it is included in this FOP and may be conducted at any time.

**Non-Burn Fuel Treatments** – Non burn fuel treatments such as the maintenance and construction of fire control lines, fire access tracks, fuel breaks, fire infrastructure and other fuel management activities are required to support the planned burning program. Treatments to achieve these works can include slashing, pruning, chemical application (in alignment with safety standards), grazing or other operations (such as ploughing, mulching or rolling) that may be more appropriate or practical in certain areas. For example, fuel on small areas or blocks located within townships may be treated mechanically, where burning is impractical. These methods may also be more suitable in certain vegetation types.

